

Recombinant Human GOT1 Protein, Myc/DDK-tagged, C13 and N15-labeled

Cat. No. GOT1-1495H **Lot. No.** (See product label)

SPECIFICATION

Product Overview	GOT1 MS Standard C13 and N15-labeled recombinant protein (NP_002070) with a C-terminal MYC/DDK tag, was expressed in HEK293 cells.
Species	Human
Source	HEK293
Description	Glutamic-oxaloacetic transaminase is a pyridoxal phosphate-dependent enzyme which exists in cytoplasmic and mitochondrial forms, GOT1 and GOT2, respectively. GOT plays a role in amino acid metabolism and the urea and tricarboxylic acid cycles. The two enzymes are homodimeric and show close homology.
Molecular Mass	46.2 kDa
AA Sequence	<p>MAPPSVFAEVPQAQPVLVFKLTADFREDPDPRKVNLGVGAYRTDDCHPWVLPVVK KVEQKIANDNSLNHEYLPILGLAEFRSCASRLALGDDSPALKEKRVGGVQSLGGTGA LRIGADFLARWYNGTNNKNTPVYVSSPTWENHNAVFSAAAGFKDIRSYRYWDAEKR GLDLQGFLNDLENAPEFSIVVLHACAHNPTGIDPTPEQWKQIASVMKHRFLFPFFDS AYQGFASGNLERDAWAIYFVSEGFEFFCAQSFSKNFGLYNERVGNLTVVGKEPES ILQVLSQMEKIVRITWSNPPAQGARIVASTLSNPELFEEWTGNVKTMAADRILTMRSEL RARLEALKTPGTWNHITDQIGMFSFTGLNPKQVEYLVNEKHIYLLPSGRINVSGLTTK NLDYVATSIHEAVTKIQTRTRPLEQKLISEEDLAANDILDYKDDDDKV</p>
Purity	> 80% as determined by SDS-PAGE and Coomassie blue staining

 Tel: 1-631-559-9269 1-516-512-3133

 Email: info@creative-biomart.com  Fax: 1-631-938-8127

 45-1 Ramsey Road, Shirley, NY 11967, USA

Stability	Stable for 3 months from receipt of products under proper storage and handling conditions.
Storage	Store at -80 centigrade. Avoid repeated freeze-thaw cycles.
Concentration	50 µg/mL as determined by BCA
Storage Buffer	100 mM glycine, 25 mM Tris-HCl, pH 7.3.

GENE INFORMATION

Gene Name	GOT1 glutamic-oxaloacetic transaminase 1 [Homo sapiens (human)]
Official Symbol	GOT1
Synonyms	GOT1; glutamic-oxaloacetic transaminase 1, soluble (aspartate aminotransferase 1); aspartate aminotransferase, cytoplasmic; transaminase A; growth-inhibiting protein 18; glutamate oxaloacetate transaminase 1; GIG18; ASTQTL1;
Gene ID	2805
mRNA Refseq	NM_002079
Protein Refseq	NP_002070
MIM	138180
UniProt ID	P17174

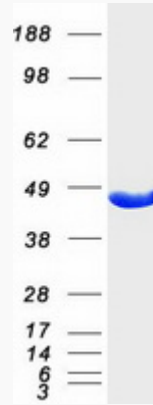
 Tel: 1-631-559-9269 1-516-512-3133

 Email: info@creative-biomart.com  Fax: 1-631-938-8127

 45-1 Ramsey Road, Shirley, NY 11967, USA



SDS-PAGE



Tel: 1-631-559-9269 1-516-512-3133

Email: info@creative-biomart.com Fax: 1-631-938-8127

45-1 Ramsey Road, Shirley, NY 11967, USA