

# Recombinant Full Length Human GOT1 Protein, C-Flag-tagged

**Cat. No.** GOT1-2051HFL    **Lot. No.** (See product label)

## SPECIFICATION

<b>Product Overview</b>	Recombinant Full Length Human GOT1 Protein, fused to Flag-tag at C-terminus, was expressed in Mammalian cells.
<b>Species</b>	Human
<b>Source</b>	Mammalian Cells
<b>Description</b>	Glutamic-oxaloacetic transaminase is a pyridoxal phosphate-dependent enzyme which exists in cytoplasmic and mitochondrial forms, GOT1 and GOT2, respectively. GOT plays a role in amino acid metabolism and the urea and tricarboxylic acid cycles. The two enzymes are homodimeric and show close homology.
<b>Form</b>	25 mM Tris HCl, pH 7.3, 100 mM glycine, 10% glycerol.
<b>Molecular Mass</b>	46.1 kDa
<b>AA Sequence</b>	<p>MAPPSVFAEVPQAQPVLVFKLTADFREDPDPRKVNLGVGAYRTDDCHPWVLPVVK  KVEQKIANDNSLNHE YLPILGLAEFRSCASRLALGDDSPALKEKRVGGVQSLGGTG  ALRIGADFLARWYNGTNNKNTPVYVSSPT WENHNAVFSAAAGFKDIRSYRYWDAEK  RGLDLQGFLNDLENAPEFSIVVLHACAHNPTGIDPTPEQWKQIA SVMKHRFLFPFFD  SAYQGFASGNLERDAWAIRYFVSEGFEFFCAQSFSKNFGLYNERVGNLTVVGKEPE  S ILQVLSQMEKIVRITWSNPPAQGARIVASTLSNPELFEWTGNVKTMAADRILTMRS  ELRARLEALKTPGT WNHITDQIGMFSFTGLNPKQVEYLVNEKHIIYLLPSGRINVSGLT  TKNLDYVATSIHEAVTKIQ TRTRPLEQKLISEEDLAANDILDYKDDDDKV</p>

 Tel: 1-631-559-9269    1-516-512-3133

 Email: [info@creative-biomart.com](mailto:info@creative-biomart.com)     Fax: 1-631-938-8127

 45-1 Ramsey Road, Shirley, NY 11967, USA

<b>Purity</b>	> 80% as determined by SDS-PAGE and Coomassie blue staining.
<b>Stability</b>	Stable for 12 months from the date of receipt of the product under proper storage and handling conditions. Avoid repeated freeze-thaw cycles.
<b>Storage</b>	Store at -80 centigrade.
<b>Concentration</b>	>50 ug/mL as determined by microplate BCA method.
<b>Preparation</b>	Recombinant protein was captured through anti-DDK affinity column followed by conventional chromatography steps.
<b>Protein Pathways</b>	Alanine, aspartate and glutamate metabolism, Arginine and proline metabolism, Cysteine and methionine metabolism, Metabolic pathways, Phenylalanine, tyrosine and tryptophan biosynthesis, Phenylalanine metabolism, Tyrosine metabolism
<b>Full Length</b>	Full L.

## GENE INFORMATION

<b>Gene Name</b>	<a href="#">GOT1 glutamic-oxaloacetic transaminase 1 [ Homo sapiens (human) ]</a>
<b>Official Symbol</b>	<a href="#">GOT1</a>
<b>Synonyms</b>	AST; AST1; SGOT; cCAT; GIG18; cAspAT; ASTQTL1
<b>Gene ID</b>	<a href="#">2805</a>
<b>mRNA Refseq</b>	<a href="#">NM_002079.3</a>
<b>Protein Refseq</b>	<a href="#">NP_002070.1</a>

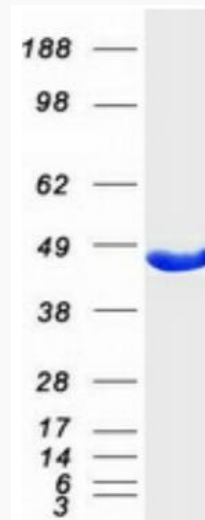
 Tel: 1-631-559-9269 1-516-512-3133

 Email: [info@creative-biomart.com](mailto:info@creative-biomart.com)  Fax: 1-631-938-8127

 45-1 Ramsey Road, Shirley, NY 11967, USA

**MIM** 138180

**UniProt ID** P17174



Coomassie blue staining of purified GOT1 protein.

 Tel: 1-631-559-9269 1-516-512-3133

 Email: [info@creative-biomart.com](mailto:info@creative-biomart.com)  Fax: 1-631-938-8127

 45-1 Ramsey Road, Shirley, NY 11967, USA