

Recombinant Human GOT1 protein

Cat. No. GOT1-2588H Lot. No. (See product label)

SPECIFICATION

Product Overview	Recombinant Human cAspAT/AATC/GOT1 Protein is produced by E. coli expression system. The target protein is expressed with sequence (Ala2-Gln413) of human cAspAT (Accession #NP_002070.1).
Species	Human
Source	E.coli
ProteinLength	Ala2-Gln413
Form	Lyophilized from a 0.22 µm filtered solution of PBS, pH 7.4.
Molecular Mass	40 kDa
Endotoxin	< 0.1 EU/µg of the protein by LAL method.
Purity	> 95% by SDS-PAGE.
Storage	Store the lyophilized protein at -20°C to -80 °C for long term. After reconstitution, the protein solution is stable at -20 °C for 3 months, at 2-8 °C for up to 1 week.
Reconstitution	Reconstitute to a concentration of 0.1-0.5 mg/mL in sterile distilled water.

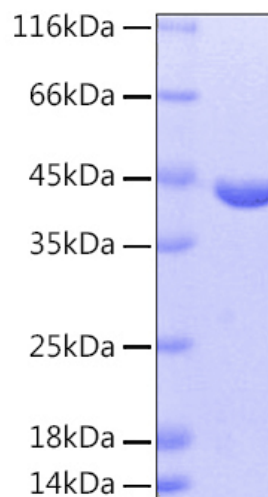
GENE INFORMATION

 Tel: 1-631-559-9269 1-516-512-3133

 Email: info@creative-biomart.com  Fax: 1-631-938-8127

 45-1 Ramsey Road, Shirley, NY 11967, USA

Gene Name	GOT1 glutamic-oxaloacetic transaminase 1, soluble (aspartate aminotransferase 1) [Homo sapiens]
Official Symbol	GOT1
Synonyms	GOT1; glutamic-oxaloacetic transaminase 1, soluble (aspartate aminotransferase 1); aspartate aminotransferase, cytoplasmic; transaminase A; growth-inhibiting protein 18; glutamate oxaloacetate transaminase 1; GIG18; ASTQTL1;
Gene ID	2805
mRNA Refseq	NM_002079
Protein Refseq	NP_002070
MIM	138180
UniProt ID	P17174

SDS-PAGE


 Tel: 1-631-559-9269 1-516-512-3133

 Email: info@creative-biomart.com  Fax: 1-631-938-8127

 45-1 Ramsey Road, Shirley, NY 11967, USA