

Recombinant Human GOT1 protein, His-tagged

Cat. No. GOT1-434H Lot. No. (See product label)

SPECIFICATION

Product Overview	Recombinant Human GOT1 (P17174) aa. (Ala2~Gln413) fused with His tag was produced in Yeast cells.
Species	Human
Source	Yeast
ProteinLength	Ala2~Gln413
Description	Glutamic-oxaloacetic transaminase is a pyridoxal phosphate-dependent enzyme which exists in cytoplasmic and mitochondrial forms, GOT1 and GOT2, respectively. GOT plays a role in amino acid metabolism and the urea and tricarboxylic acid cycles. The two enzymes are homodimeric and show close homology.
Form	Freeze-dried powder
Molecular Mass	Predicted Molecular Mass: 47.5kDa; Accurate Molecular Mass: 48kDa as determined by SDS-PAGE reducing conditions.
Endotoxin	<1.0EU per 1ug (determined by the LAL method)
Purity	> 95%
Characteristic	Isoelectric point is 6.6.

 Tel: 1-631-559-9269 1-516-512-3133

 Email: info@creative-biomart.com  Fax: 1-631-938-8127

 45-1 Ramsey Road, Shirley, NY 11967, USA

Applications	SDS-PAGE; WB; ELISA; IP; CoIP; EMSA; Reporter Assays; Purification; Amine Reactive Labeling
Stability	The thermal stability is described by the loss rate. The loss rate was determined by accelerated thermal degradation test, that is, incubate the protein at 37°C for 48h, and no obvious degradation and precipitation were observed. The loss rate is less than 5% within the expiration date under appropriate storage condition.
Storage	Avoid repeated freeze/thaw cycles. Store at 2-8°C for one month. Aliquot and store at -80°C for 12 months.
Concentration	200ug/mL
Storage buffer	20mM Tris, 150mM NaCl, pH8.0, containing 1mM EDTA, 1mM DTT, 5% Trehalose and Proclin300.
Reconstitution	Reconstitute in 20mM Tris, 150mM NaCl (pH8.0) to a concentration of 0.1-1.0 mg/mL. Do not vortex.

GENE INFORMATION

Gene Name	GOT1 glutamic-oxaloacetic transaminase 1 [Homo sapiens (human)]
Official Symbol	GOT1
Synonyms	GOT1; glutamic-oxaloacetic transaminase 1; AST1; cCAT; GIG18; cAspAT; ASTQTL1; aspartate aminotransferase, cytoplasmic; aspartate aminotransferase 1; aspartate transaminase 1; cysteine aminotransferase, cytoplasmic; cysteine transaminase, cytoplasmic; glutamate oxaloacetate transaminase 1; glutamic-oxaloacetic transaminase 1, soluble; growth-inhibiting protein 18; testis secretory sperm-binding protein Li 196a; transaminase A

 Tel: 1-631-559-9269 1-516-512-3133

 Email: info@creative-biomart.com  Fax: 1-631-938-8127

 45-1 Ramsey Road, Shirley, NY 11967, USA

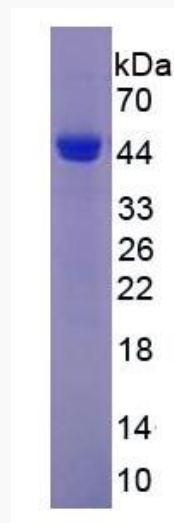
Gene ID 2805

mRNA Refseq NM_002079.2

Protein Refseq NP_002070.1

UniProt ID P17174

SDS-PAGE



 Tel: 1-631-559-9269 1-516-512-3133

 Email: info@creative-biomart.com  Fax: 1-631-938-8127

 45-1 Ramsey Road, Shirley, NY 11967, USA