

Recombinant Cattle GOT1 protein, His & T7-tagged

Cat. No. GOT1-5816C Lot. No. (See product label)

SPECIFICATION

Product Overview	Recombinant Cattle GOT1 aa. (Ala2~Gln413 (Accession# P33097)) fused with N-terminal His & T7 tag was produced in E. coli cells.
Species	Cattle
Source	E.coli
ProteinLength	Ala2~Gln413
Form	Freeze-dried powder
Molecular Mass	Predicted Molecular Mass: 50.0kDa
Endotoxin	<1.0EU per 1g (determined by the LAL method)
Purity	>95%
Characteristic	The isoelectric point is 7.2.
Applications	SDS-PAGE; WB; ELISA; IP.
Stability	The thermal stability is described by the loss rate. The loss rate was determined by accelerated thermal degradation test, that is, incubate the protein at 37°C for 48h, and no obvious degradation and precipitation were observed. The loss rate is less than 5% within the expiration date under appropriate storage condition.

 Tel: 1-631-559-9269 1-516-512-3133

 Email: info@creative-biomart.com  Fax: 1-631-938-8127

 45-1 Ramsey Road, Shirley, NY 11967, USA

Storage	Avoid repeated freeze/thaw cycles. Store at 2-8°C for one month. Aliquot and store at -80°C for 12 months.
Storage buffer	Supplied as lyophilized form in PBS, pH7.4, containing 5% trehalose, 0.01% sarcosyl.
Reconstitution	Reconstitute in sterile PBS, pH7.2-pH7.4.

GENE INFORMATION

Gene Name	GOT1 glutamic-oxaloacetic transaminase 1 [<i>Bos taurus</i> (cattle)]
Official Symbol	GOT1
Synonyms	cCAT; cAspAT; aspartate aminotransferase 1; cysteine aminotransferase, cytoplasmic; cysteine transaminase, cytoplasmic; glutamate oxaloacetate transaminase 1, soluble; glutamic-oxaloacetic transaminase 1, soluble (aspartate aminotransferase 1); transaminase A; aspartate aminotransferase, cytoplasmic
Gene ID	281206
mRNA Refseq	NM_177502.2
Protein Refseq	NP_803468.1
UniProt ID	P33097

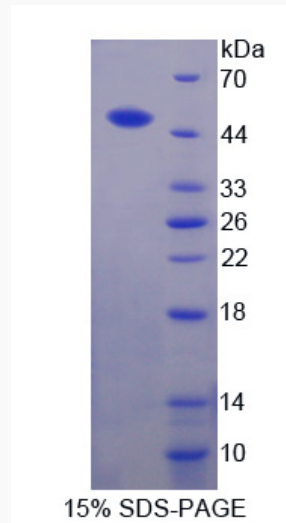
 Tel: 1-631-559-9269 1-516-512-3133

 Email: info@creative-biomart.com  Fax: 1-631-938-8127

 45-1 Ramsey Road, Shirley, NY 11967, USA



SDS-PAGE



Tel: 1-631-559-9269 1-516-512-3133

Email: info@creative-biomart.com Fax: 1-631-938-8127

45-1 Ramsey Road, Shirley, NY 11967, USA