

# Recombinant Bovine GOT2 Protein (20-430 aa), His-SUMO-tagged

**Cat. No.** GOT2-1994B    **Lot. No.** (See product label)

## SPECIFICATION

<b>Product Overview</b>	Recombinant Bovine GOT2 Protein (20-430 aa) is produced by E. coli expression system. This protein is fused with a 6xHis-SUMO tag at the N-terminal. Research Area: Metabolism. Protein Description: Full Length of Mature Protein.
<b>Species</b>	Bovine
<b>Source</b>	E.coli
<b>ProteinLength</b>	20-430 aa
<b>Description</b>	Catalyzes the irreversible transamination of the L-tryptophan metabolite L-kynurenine to form kynurenic acid (KA). Plays a key role in amino acid metabolism. Important for metabolite exchange between mitochondria and cytosol. Facilitates cellular uptake of long-chain free fatty acids (By similarity).
<b>Form</b>	Tris-based buffer,50% glycerol
<b>Molecular Mass</b>	61.5 kDa
<b>AA Sequence</b>	GLAAAASARASSWWAHVEMGPPDPILGVTEAFKRDTNSKMMNLGVGAYRDDNGKP YVLPsvrkAeAQIAAKNLDKEYLPIAGLAEFCKASAELALGENNEVLKSGRYVTVQTI SGTGALRIGASFLQRFFKFSRDVFLPKPTWGNHTPIFRDAGMQLQSYRYYPKTCG FDFTGAIEDISKIPAQSVILLHACAHNPTGVDPRPEQWKEMATVVKKNLFAFFDMAY QGFASGDGNKDAWAVRHFIEQGINVCLCQSYAKNMGLYGERVGAFTVVCkDAEEA

 Tel: 1-631-559-9269    1-516-512-3133

 Email: [info@creative-biomart.com](mailto:info@creative-biomart.com)     Fax: 1-631-938-8127

 45-1 Ramsey Road, Shirley, NY 11967, USA

KRVESQLKILIRPMYSNPPINGARIASTILTSPDLRKQWLHEVKGMADRIISMRTQLVS  
 NLKKEGSSHNWQHIIDQIGMFCYTGLKPEQVERLTKEFSIYMTKDGRISVAGVTSGN  
 VAYLAHAIHQVTK

**Purity** > 90% as determined by SDS-PAGE.

**Notes** Repeated freezing and thawing is not recommended. Store working aliquots at 4 centigrade for up to one week.

**Storage** The shelf life is related to many factors, storage state, buffer ingredients, storage temperature and the stability of the protein itself. Generally, the shelf life of liquid form is 6 months at -20 centigrade/-80 centigrade. The shelf life of lyophilized form is 12 months at -20 centigrade/-80 centigrade.

**Concentration** A hardcopy of COA with reconstitution instruction is sent along with the products.

## GENE INFORMATION

**Gene Name** [GOT2 glutamic-oxaloacetic transaminase 2 \[ Bos taurus \(cattle\) \]](#)

**Official Symbol** [GOT2](#)

**Synonyms** GOT2;

**Gene ID** [286886](#)

**mRNA Refseq** [NM\\_174806](#)

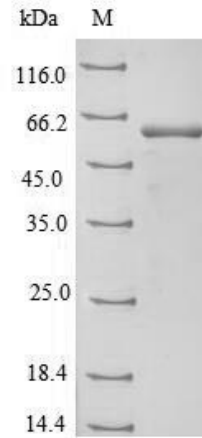
**Protein Refseq** [NP\\_777231](#)

**UniProt ID** [P12344](#)

 Tel: 1-631-559-9269 1-516-512-3133

 Email: [info@creative-biomart.com](mailto:info@creative-biomart.com)  Fax: 1-631-938-8127

 45-1 Ramsey Road, Shirley, NY 11967, USA



(Tris-Glycine gel) Discontinuous SDS-PAGE (reduced) with 5% enrichment gel and 15% separation gel.

 Tel: 1-631-559-9269 1-516-512-3133

 Email: [info@creative-biomart.com](mailto:info@creative-biomart.com)  Fax: 1-631-938-8127

 45-1 Ramsey Road, Shirley, NY 11967, USA