

# Recombinant Hantaan virus (strain 76-118) GP protein(649-1105aa)

**Cat. No.** GP-3722H    **Lot. No.** (See product label)

## SPECIFICATION

<b>Product Overview</b>	Recombinant Hantaan virus (strain 76-118) GP protein(P08668)(649-1105aa), fused with C-terminal His tag, was expressed in HEK293.
<b>Species</b>	Hantaan virus
<b>Source</b>	HEK293
<b>ProteinLength</b>	649-1105aa
<b>Form</b>	If the delivery form is liquid, the default storage buffer is Tris/PBS-based buffer, 5%-50% glycerol. If the delivery form is lyophilized powder, the buffer before lyophilization is Tris/PBS-based buffer, 6% Trehalose, pH 8.0.
<b>Molecular Mass</b>	52.7 kDa
<b>Purity</b>	Greater than 90% as determined by SDS-PAGE.
<b>Storage</b>	Store at -20°C/-80°C upon receipt, aliquoting is necessary for multiple use. Avoid repeated freeze-thaw cycles.
<b>Reconstitution</b>	We recommend that this vial be briefly centrifuged prior to opening to bring the contents to the bottom. Please reconstitute protein in deionized sterile water to a concentration of 0.1-1.0 mg/mL. We recommend to add 5-50% of glycerol (final concentration) and aliquot for long-term storage at -20°C/-80°C.

 Tel: 1-631-559-9269    1-516-512-3133

 Email: [info@creative-biomart.com](mailto:info@creative-biomart.com)     Fax: 1-631-938-8127

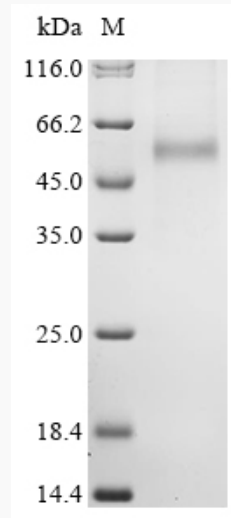
 45-1 Ramsey Road, Shirley, NY 11967, USA



**AA Sequence**

SETPLTPVWNDNAHGVGSVPMHTDLELDFSLTSSSKYTYRRKLTNPLEEAQSIDLHI  
EIEEQTIGVDVHALGHWFDRNLKTSFHCYGACTKYEYPWHTAKCHYERDYQYET  
SWGCPNSDCPGVGTGCTACGLYLDQLKPVGSAYKIITIRYSRRVCVQFGEENLCKII  
DMNDCFVSRHVKVCIIIGTVSKFSQGD TLLFFGPLEGGGLIFKHWCTSTCQFGDPGDI  
MSPRDKGFLCPEFFPGSFRKKNFATTPICEYDGNM/SGYKKVMATIDSFQSFNTST  
MHFTDERIEWKDPDGMLRDHINILVTKDIDFDNLGENPCKIGLQTSSIEGAWGSGVG  
FTLTCLVSLTECPTFLTSTIKACDKAICYGAESVTLTRGQNTVKVSGKGGHSGSTFRC  
CHGEDCSQIGLHAAAPHLDKVNGISEIENSKVYDDGAPQCGIKCWFVKSGEWISGIF  
SGN

**SDS-PAGE**



Tel: 1-631-559-9269 1-516-512-3133

Email: [info@creative-biomart.com](mailto:info@creative-biomart.com) Fax: 1-631-938-8127

45-1 Ramsey Road, Shirley, NY 11967, USA