

# Recombinant Human GP1BA Protein (17-531 aa), His-tagged

Cat. No. GP1BA-1401H Lot. No. (See product label)

## SPECIFICATION

<b>Product Overview</b>	Recombinant Human GP1BA Protein (17-531 aa) is produced by Yeast expression system. This protein is fused with a 6xHis tag at the N-terminal. Research Area: Cardiovascular. Protein Description: Partial.
<b>Species</b>	Human
<b>Source</b>	Yeast
<b>ProteinLength</b>	17-531 aa
<b>Description</b>	GP-Ib, a surface membrane protein of platelets, participates in the formation of platelet plugs by binding to the A1 domain of vWF, which is already bound to the subendothelium.
<b>Form</b>	Tris-based buffer,50% glycerol
<b>Molecular Mass</b>	58.9 kDa
<b>AA Sequence</b>	<p>HPICEVSKVASHLEVNC DKRNLTALPPDLPKD TTILHLS ENLLYTFSLATLMPYTRLTQ  LNLDRCELTKLQVDGTL PVLGTLDSLHNQLQSLPLL GQTLPALTVLDVSFNRLTSLPL  GALRGLGELQELYLKGNELKTLPPGLLTPTPKLEKLSLANNLTEL PAGLLNGLENLD  TLLLQENSLYTIPKGF FGSHELLPFAFLHGNPWLCNCEILYFRRWLQDNAENVYVWKQ  GVDVKAMTSNVASVQCDNSDKFPVYKYPGKGCPTLGDEGDTDLYDYYPEEDTEGD  KVRATRTVVKFPTKAHTTPWGLFYSWSTASLDSQMPSSLHPTQESTKEQTTFPPR  WTPNFTLHMESITFSKTPKSTTEPTSPPTTSEPVPEPAPNM TTTLEPTSPPTPEPTSE</p>

 Tel: 1-631-559-9269 1-516-512-3133

 Email: [info@creative-biomart.com](mailto:info@creative-biomart.com)  Fax: 1-631-938-8127

 45-1 Ramsey Road, Shirley, NY 11967, USA

PAPSPTTPEPTPIPTIATSPTILVSATSLITPKSTFLTTTKPVSLLLESTKKTIPELDQPPKL  
 RGVLQGHLESSRNDPFLHPDFCCLLPLGFYVLGLFWLLFASVVLILLLSWVGH

**Purity** > 90% as determined by SDS-PAGE.

**Notes** Repeated freezing and thawing is not recommended. Store working aliquots at 4 centigrade for up to one week.

**Storage** The shelf life is related to many factors, storage state, buffer ingredients, storage temperature and the stability of the protein itself. Generally, the shelf life of liquid form is 6 months at -20 centigrade/-80 centigrade. The shelf life of lyophilized form is 12 months at -20 centigrade/-80 centigrade.

**Concentration** A hardcopy of COA with reconstitution instruction is sent along with the products.

## GENE INFORMATION

**Gene Name** [GP1BA glycoprotein Ib \(platelet\), alpha polypeptide \[ Homo sapiens \]](#)

**Official Symbol** [GP1BA](#)

**Synonyms** GP1BA; GP1B; CD42b; GP-Ib alpha; BSS; VWDP; CD42B; GPIbA; BDPLT1; BDPLT3; DBPLT3; CD42b-alpha; MGC34595;

**Gene ID** [2811](#)

**mRNA Refseq** [NM\\_000173](#)

**Protein Refseq** [NP\\_000164](#)

**MIM** [606672](#)

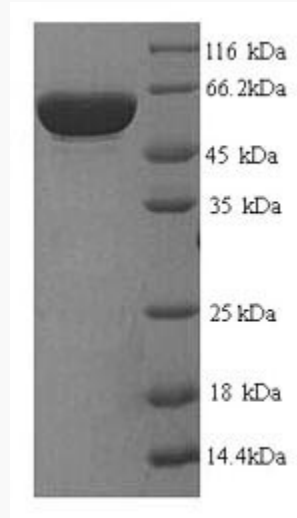
 Tel: 1-631-559-9269 1-516-512-3133

 Email: [info@creative-biomart.com](mailto:info@creative-biomart.com)  Fax: 1-631-938-8127

 45-1 Ramsey Road, Shirley, NY 11967, USA

UniProt ID

BC027955



(Tris-Glycine gel) Discontinuous SDS-PAGE (reduced) with 5% enrichment gel and 15% separation gel.

 Tel: 1-631-559-9269 1-516-512-3133

 Email: [info@creative-biomart.com](mailto:info@creative-biomart.com)  Fax: 1-631-938-8127

 45-1 Ramsey Road, Shirley, NY 11967, USA