

Recombinant Human GP1BA protein, His & T7-tagged

Cat. No. GP1BA-1511H Lot. No. (See product label)

SPECIFICATION

Product Overview	Recombinant Human GP1BA aa. (Ile19~Leu291 (Accession # P07359)) fused with N-terminal His & T7 tag was produced in E. coli cells.
Species	Human
Source	E.coli
ProteinLength	Ile19~Leu291
Description	<p>Glycoprotein Ib (GP Ib) is a platelet surface membrane glycoprotein composed of a heterodimer, an alpha chain and a beta chain, that is linked by disulfide bonds. The Gp Ib functions as a receptor for von Willebrand factor (VWF). The complete receptor complex includes noncovalent association of the alpha and beta subunits with platelet glycoprotein IX and platelet glycoprotein V. The binding of the GP Ib-IX-V complex to VWF facilitates initial platelet adhesion to vascular subendothelium after vascular injury, and also initiates signaling events within the platelet that lead to enhanced platelet activation, thrombosis, and hemostasis. This gene encodes the alpha subunit. Mutations in this gene result in Bernard-Soulier syndromes and platelet-type von Willebrand disease. The coding region of this gene is known to contain a polymorphic variable number tandem repeat (VNTR) domain that is associated with susceptibility to nonarteritic anterior ischemic optic neuropathy.</p>
Form	Freeze-dried powder
Molecular Mass	Predicted Molecular Mass: 34.0kDa.

 Tel: 1-631-559-9269 1-516-512-3133

 Email: info@creative-biomart.com  Fax: 1-631-938-8127

 45-1 Ramsey Road, Shirley, NY 11967, USA


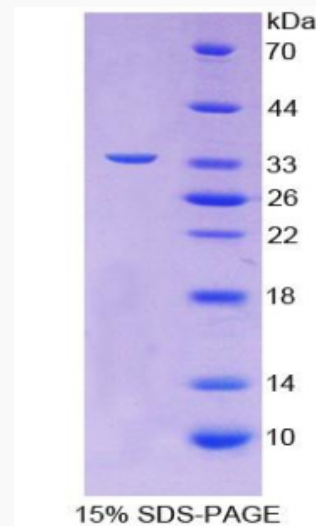
Endotoxin	<1.0EU per 1g (determined by the LAL method).
Purity	>90%
Characteristic	The isoelectric point is 5.9.
Applications	SDS-PAGE; WB; ELISA; IP.
Stability	The thermal stability is described by the loss rate. The loss rate was determined by accelerated thermal degradation test, that is, incubate the protein at 37°C for 48h, and no obvious degradation and precipitation were observed. The loss rate is less than 5% within the expiration date under appropriate storage condition.
Storage	Avoid repeated freeze/thaw cycles. Store at 2-8°C for one month. Aliquot and store at -80°C for 12 months.
Storage buffer	Supplied as lyophilized form in 20mM Tris, 150mM NaCl, pH8.0, containing 1mM EDTA, 1mM DTT, 0.01% sarcosyl, 5% trehalose, and preservative.
Reconstitution	Reconstitute in ddH ₂ O.
GENE INFORMATION	
Gene Name	GP1BA glycoprotein Ib platelet alpha subunit [Homo sapiens (human)]
Official Symbol	GP1BA
Synonyms	BSS; GP1B; VWDP; CD42B; GPIbA; BDPLT1; BDPLT3; DBPLT3; GPIbalpha; CD42b-alpha; GP-Ib alpha; antigen CD42b-alpha; glycoprotein Ib (platelet), alpha polypeptide; mutant platelet membrane glycoprotein Ib-alpha; platelet membrane glycoprotein 1b-alpha subunit; platelet membrane glycoprotein Ib-alpha; platelet

 Tel: 1-631-559-9269 1-516-512-3133

 Email: info@creative-biomart.com  Fax: 1-631-938-8127

 45-1 Ramsey Road, Shirley, NY 11967, USA

glycoprotein Ib alpha chain

Gene ID 2811**mRNA Refseq** NM_000173.6**Protein Refseq** NP_000164.5**UniProt ID** P07359**SDS-PAGE** Tel: 1-631-559-9269 1-516-512-3133 Email: info@creative-biomart.com  Fax: 1-631-938-8127 45-1 Ramsey Road, Shirley, NY 11967, USA