

Recombinant Human GP1BA protein, His-tagged

Cat. No. GP1BA-1832H Lot. No. (See product label)

SPECIFICATION

Product Overview	Recombinant Human GP1BA aa. (Leu136~Pro276 (Accession # P07359)) fused with N-terminal His tag was produced in E. coli cells.
Species	Human
Source	E.coli
ProteinLength	Leu136~Pro276
Form	Freeze-dried powder
Molecular Mass	Predicted Molecular Mass: 17.4kDa
Endotoxin	<1.0EU per 1ug (determined by the LAL method)
Purity	>95%
Characteristic	The isoelectric point is 6.2.
Applications	SDS-PAGE; WB; ELISA; IP.
Stability	The thermal stability is described by the loss rate of the target protein. The loss rate was determined by accelerated thermal degradation test, that is, incubate the protein at 37°C for 48h, and no obvious degradation and precipitation were observed. (Referring from China Biological Products Standard, which was calculated by the

 Tel: 1-631-559-9269 1-516-512-3133

 Email: info@creative-biomart.com  Fax: 1-631-938-8127

 45-1 Ramsey Road, Shirley, NY 11967, USA

Arrhenius equation.) The loss of this protein is less than 5% within the expiration date under appropriate storage condition.

Storage

Avoid repeated freeze/thaw cycles. Store at 2-8°C for one month. Aliquot and store at -80°C for 12 months.

Storage buffer

Supplied as lyophilized form in PBS, pH8.0, containing 5% sucrose, 0.02% sarcosyl.

Reconstitution

Reconstitute in sterile PBS.

GENE INFORMATION

Gene Name

GP1BA glycoprotein Ib platelet alpha subunit [Homo sapiens (human)]

Official Symbol

GP1BA

Synonyms

GP1BA; glycoprotein Ib platelet alpha subunit; BSS; GP1B; VWDP; CD42B; GPIbA; BDPLT1; BDPLT3; DBPLT3; GPIbalpha; CD42b-alpha; platelet glycoprotein Ib alpha chain; GP-Ib alpha; antigen CD42b-alpha; glycoprotein Ib (platelet), alpha polypeptide; mutant platelet membrane glycoprotein Ib-alpha; platelet membrane glycoprotein 1b-alpha subunit; platelet membrane glycoprotein Ib-alpha

Gene ID

2811

mRNA Refseq

NM_000173.6

Protein Refseq

NP_000164.5

UniProt ID

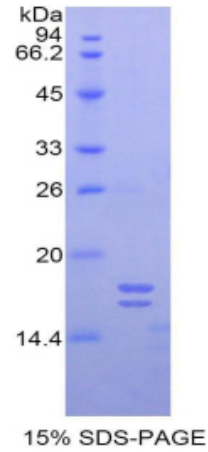
P07359

 Tel: 1-631-559-9269 1-516-512-3133

 Email: info@creative-biomart.com  Fax: 1-631-938-8127

 45-1 Ramsey Road, Shirley, NY 11967, USA

SDS-PAGE



 Tel: 1-631-559-9269 1-516-512-3133

 Email: info@creative-biomart.com  Fax: 1-631-938-8127

 45-1 Ramsey Road, Shirley, NY 11967, USA