

Recombinant Human GP1BA Protein (Met1-Leu531), C-His tagged

Cat. No. GP1BA-4205H Lot. No. (See product label)

SPECIFICATION

Product Overview	Recombinant human GP1BA (Met1-Leu531) fused with the C-terminal His tag was expressed in Mammalian cells.
Species	Human
Source	Mammalian Cells
ProteinLength	Met1-Leu531
Form	Lyophilized powder/frozen liquid
Molecular Mass	58.52 kDa
Endotoxin	< 1.0 EU/μg of the protein as determined by the LAL method.
Purity	>90% as determined by SDS-PAGE.
Notes	For research use only.
Storage	Use a manual defrost freezer and avoid repeated freeze thaw cycles. Store at 2 to 8 centigrade for one week. Store at -20 to -80 centigrade for twelve months from the date of receipt.
Storage Buffer	Supplied as solution form in PBS or lyophilized from PBS.

 Tel: 1-631-559-9269 1-516-512-3133

 Email: info@creative-biomart.com  Fax: 1-631-938-8127

 45-1 Ramsey Road, Shirley, NY 11967, USA

Reconstitution Reconstitute in sterile water for a stock solution.

Shipping They are shipped out with dry ice/blue ice unless customers require otherwise.

GENE INFORMATION

Gene Name GP1BA glycoprotein Ib (platelet), alpha polypeptide [Homo sapiens (human)]

Official Symbol GP1BA

Synonyms GP1BA; glycoprotein Ib (platelet), alpha polypeptide; GP1B; platelet glycoprotein Ib alpha chain; CD42b; GP-Ib alpha; antigen CD42b-alpha; platelet membrane glycoprotein 1b-alpha subunit; BSS; VWDP; CD42B; GPIbA; BDPLT1; BDPLT3; DBPLT3; CD42b-alpha; MGC34595;

Gene ID 2811

mRNA Refseq NM_000173

Protein Refseq NP_000164

MIM 606672

UniProt ID P07359

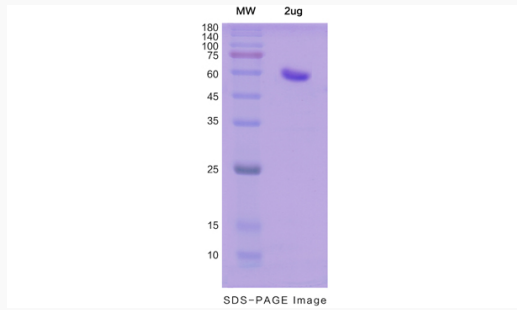
 Tel: 1-631-559-9269 1-516-512-3133

 Email: info@creative-biomart.com  Fax: 1-631-938-8127

 45-1 Ramsey Road, Shirley, NY 11967, USA



SDS-PAGE



Tel: 1-631-559-9269 1-516-512-3133

Email: info@creative-biomart.com Fax: 1-631-938-8127

45-1 Ramsey Road, Shirley, NY 11967, USA