

Recombinant Human GP1BA Protein (17-505 aa), His-tagged

Cat. No. GP1BA-531H Lot. No. (See product label)

SPECIFICATION

Product Overview	Recombinant Human GP1BA Protein (17-505 aa) is produced by E. coli expression system. This protein is fused with a 6xHis tag at the N-terminal. Research Area: Cardiovascular. Protein Description: Partial.
Species	Human
Source	E.coli
ProteinLength	17-505 aa
Description	GP-Ib, a surface mbrane protein of platelets, participates in the formation of platelet plugs by binding to the A1 domain of vWF, which is already bound to the subendothelium.
Form	Tris-based buffer, 50% glycerol
Molecular Mass	57.9 kDa
AA Sequence	<p>HPICEVSKVASHLEVNC DKRNLTALPPDLPKD TTILHLS ENLLYTFSLATLMPYTRLTQ LNLDRCELTKLQVDGTL PVLGTLDSLHNQLQSLPLL GQTLPALTVLDVSNRLTSLPL GALRGLGELQELYLKGNELKTLPPGLLTPTPKLEKLSLANNLTEL PAGLLNGLENLD TLLLQENSLYTIPKGF FGSHELLPFAFLHGNPWLCNCEILYFRRWLQDNAENVYVWKQ GVDVKAMTSNVA SVQCDNSDKFPVYKYPGKGCPTLGDEGDTDL YDYYPEEDTEGD KVRATRTVVKFPTKAHTTPWGLFYSWSTASLDSQMPSSLHPTQESTKEQTTFPPR WTPNFTLHMESITFSKTPKSTTEPTSPPTTSEPVP EPAPNM TTTLEPTSPPTTPEPTSE</p>

 Tel: 1-631-559-9269 1-516-512-3133

 Email: info@creative-biomart.com  Fax: 1-631-938-8127

 45-1 Ramsey Road, Shirley, NY 11967, USA

PAPSPTTPEPTPIPTIATSPTILVSATSLITPKSTFLTTTKPVSLLLESTKKTIPELDQPPKL
 RGVLQGHLESSRNDPFLHPDFCCLLPL

Purity > 90% as determined by SDS-PAGE.

Notes Repeated freezing and thawing is not recommended. Store working aliquots at 4 centigrade for up to one week.

Storage The shelf life is related to many factors, storage state, buffer ingredients, storage temperature and the stability of the protein itself. Generally, the shelf life of liquid form is 6 months at -20 centigrade/-80 centigrade. The shelf life of lyophilized form is 12 months at -20 centigrade/-80 centigrade.

Concentration A hardcopy of COA with concentration instruction is sent along with the products.

GENE INFORMATION

Gene Name GP1BA glycoprotein Ib (platelet), alpha polypeptide [Homo sapiens]

Official Symbol GP1BA

Synonyms GP1BA; GP1B; CD42b; BSS; VWDP; CD42B; GPIbA; BDPLT1; BDPLT3; DBPLT3; CD42b-alpha; MGC34595;

Gene ID 2811

mRNA Refseq NM_000173

Protein Refseq NP_000164

MIM 606672

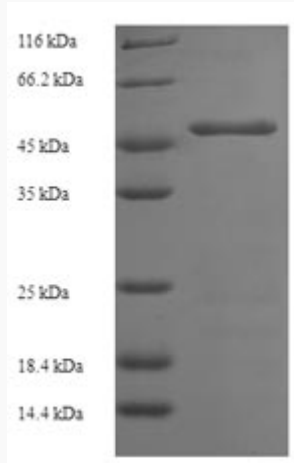
 Tel: 1-631-559-9269 1-516-512-3133

 Email: info@creative-biomart.com  Fax: 1-631-938-8127

 45-1 Ramsey Road, Shirley, NY 11967, USA

UniProt ID

BC027955



(Tris-Glycine gel) Discontinuous SDS-PAGE (reduced) with 5% enrichment gel and 15% separation gel.

 Tel: 1-631-559-9269 1-516-512-3133

 Email: info@creative-biomart.com  Fax: 1-631-938-8127

 45-1 Ramsey Road, Shirley, NY 11967, USA