

Recombinant Human GP1BA Protein, His-tagged

Cat. No. GP1BA-683H Lot. No. (See product label)

SPECIFICATION

Product Overview	Recombinant Human GP1BA Protein (Ile19-Leu291) with His tag was expressed in 293F.
Species	Human
Source	HEK293
ProteinLength	Ile19-Leu291
Description	<p>Glycoprotein Ib (GP Ib) is a platelet surface membrane glycoprotein composed of a heterodimer, an alpha chain and a beta chain, that is linked by disulfide bonds. The Gp Ib functions as a receptor for von Willebrand factor (VWF). The complete receptor complex includes noncovalent association of the alpha and beta subunits with platelet glycoprotein IX and platelet glycoprotein V. The binding of the GP Ib-IX-V complex to VWF facilitates initial platelet adhesion to vascular subendothelium after vascular injury, and also initiates signaling events within the platelet that lead to enhanced platelet activation, thrombosis, and hemostasis. This gene encodes the alpha subunit. Mutations in this gene result in Bernard-Soulier syndromes and platelet-type von Willebrand disease. The coding region of this gene is known to contain a polymorphic variable number tandem repeat (VNTR) domain that is associated with susceptibility to nonarteritic anterior ischemic optic neuropathy.</p>
Form	Freeze-dried powder
Molecular Mass	Predicted Molecular Mass: 31.8 kDa; Accurate Molecular Mass: 38-44 kDa

 Tel: 1-631-559-9269 1-516-512-3133

 Email: info@creative-biomart.com  Fax: 1-631-938-8127

 45-1 Ramsey Road, Shirley, NY 11967, USA

Purity	> 95%
Applications	Positive Control; Immunogen; SDS-PAGE; WB.
Stability	The thermal stability is described by the loss rate. The loss rate was determined by accelerated thermal degradation test, that is, incubate the protein at 37 centigrade for 48h, and no obvious degradation and precipitation were observed. The loss rate is less than 5% within the expiration date under appropriate storage condition.
Storage	Avoid repeated freeze/thaw cycles. Store at 2-8 centigrade for one month. Aliquot and store at -80 centigrade for 12 months.
Storage Buffer	20mM Tris, 150mM NaCl, pH8.0, containing 1mM EDTA, 1mM DTT, 0.01% SKL, 5% Trehalose and Proclin300.
Reconstitution	Reconstitute in 20mM Tris, 150mM NaCl (pH8.0) to a concentration of 0.1-1.0 mg/mL. Do not vortex.

GENE INFORMATION

Gene Name	GP1BA glycoprotein Ib platelet subunit alpha [Homo sapiens (human)]
Official Symbol	GP1BA
Synonyms	GP1BA; glycoprotein Ib platelet subunit alpha; BSS; GP1B; VWDP; CD42B; GPIbA; BDPLT1; BDPLT3; DBPLT3; GPIbalpha; CD42b-alpha; platelet glycoprotein Ib alpha chain; GP-Ib alpha; antigen CD42b-alpha; glycoprotein Ib (platelet), alpha polypeptide; glycoprotein Ib platelet alpha subunit; mutant platelet membrane glycoprotein Ib-alpha; platelet membrane glycoprotein 1b-alpha subunit; platelet membrane glycoprotein Ib-alpha

 Tel: 1-631-559-9269 1-516-512-3133

 Email: info@creative-biomart.com  Fax: 1-631-938-8127

 45-1 Ramsey Road, Shirley, NY 11967, USA

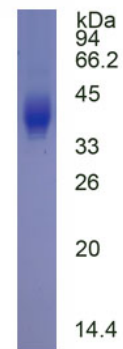
Gene ID 2811

mRNA Refseq NM_000173

Protein Refseq NP_000164

MIM 606672

UniProt ID P07359



Tel: 1-631-559-9269 1-516-512-3133

Email: info@creative-biomart.com Fax: 1-631-938-8127

45-1 Ramsey Road, Shirley, NY 11967, USA