

Recombinant Human GP1BB Full Length Transmembrane protein (26-206 aa), His-SUMO-Myc-tagged

Cat. No. GP1BB-2723H Lot. No. (See product label)

SPECIFICATION

Product Overview	Recombinant Human GP1BB Protein (26-206 aa) is produced by in vitro E. coli expression system. This protein is fused with a 10xHis-SUMO tag at the N-terminal and a Myc tag at the C-terminal.
Species	Human
Source	E.coli
ProteinLength	26-206aa
Form	If the delivery form is liquid, the default storage buffer is Tris/PBS-based buffer, 5%-50% glycerol. If the delivery form is lyophilized powder, the buffer before lyophilization is Tris/PBS-based buffer, 6% Trehalose, pH 8.0.
Molecular Mass	39.3 kDa
AA Sequence	CPAPCSCAGTLVDCGRRGLTWASLPTAFPVDTTELVLGTGNNLTALPPGLLDALPALR TAHLGANPWRCDLPLRAWLAGRPERAPYRDLRCVAPPALRGRLLPYLAEDEL RAACAPGPLCWGALAAQLALLGLGLLHALLLVLLCRLRRLRARARARAAAARLSLTD PLVAERAGTDES
Purity	Greater than 85% as determined by SDS-PAGE.

 Tel: 1-631-559-9269 1-516-512-3133

 Email: info@creative-biomart.com  Fax: 1-631-938-8127

 45-1 Ramsey Road, Shirley, NY 11967, USA

Storage Store at -20°C/-80°C upon receipt, aliquoting is necessary for mutiple use. Avoid repeated freeze-thaw cycles.

Reconstitution Please reconstitute protein in deionized sterile water to a concentration of 0.1-1.0 mg/mL. We recommend to add 5-50% of glycerol (final concentration) and aliquot for long-term storage at -20°C/-80°C. Our default final concentration of glycerol is 50%.

GENE INFORMATION

Gene Name GP1BB glycoprotein Ib (platelet), beta polypeptide [Homo sapiens]

Official Symbol GP1BB

Synonyms GP1BB; glycoprotein Ib (platelet), beta polypeptide; platelet glycoprotein Ib beta chain; CD42c; GPIb-beta; GP-Ib beta; antigen CD42b-beta; nuclear localization signal deleted in velocardiofacial syndrome; BS; CD42C; GPIBB; BDPLT1;

Gene ID 2812

mRNA Refseq NM_000407

Protein Refseq NP_000398

MIM 138720

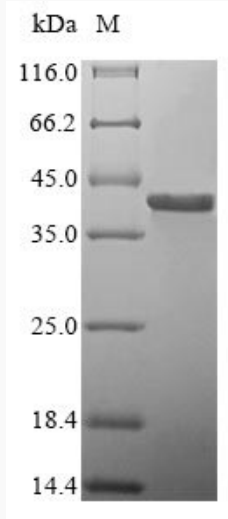
UniProt ID P13224

 Tel: 1-631-559-9269 1-516-512-3133

 Email: info@creative-biomart.com  Fax: 1-631-938-8127

 45-1 Ramsey Road, Shirley, NY 11967, USA

SDS-PAGE



 Tel: 1-631-559-9269 1-516-512-3133

 Email: info@creative-biomart.com  Fax: 1-631-938-8127

 45-1 Ramsey Road, Shirley, NY 11967, USA