

Recombinant Human GP1BB Protein (Met1-Cys147), C-His tagged

Cat. No. GP1BB-4206H Lot. No. (See product label)

SPECIFICATION

Product Overview	Recombinant human GP1BB (Met1-Cys147) fused with the C-terminal His tag was expressed in Mammalian cells.
Species	Human
Source	Mammalian Cells
ProteinLength	Met1-Cys147
Form	Lyophilized powder/frozen liquid
Molecular Mass	16.28 kDa
Endotoxin	< 1.0 EU/μg of the protein as determined by the LAL method.
Purity	>90% as determined by SDS-PAGE.
Notes	For research use only.
Storage	Use a manual defrost freezer and avoid repeated freeze thaw cycles. Store at 2 to 8 centigrade for one week. Store at -20 to -80 centigrade for twelve months from the date of receipt.
Storage Buffer	Supplied as solution form in PBS or lyophilized from PBS.

 Tel: 1-631-559-9269 1-516-512-3133

 Email: info@creative-biomart.com  Fax: 1-631-938-8127

 45-1 Ramsey Road, Shirley, NY 11967, USA

Reconstitution Reconstitute in sterile water for a stock solution.

Shipping They are shipped out with dry ice/blue ice unless customers require otherwise.

GENE INFORMATION

Gene Name GP1BB glycoprotein Ib (platelet), beta polypeptide [Homo sapiens (human)]

Official Symbol GP1BB

Synonyms GP1BB; glycoprotein Ib (platelet), beta polypeptide; platelet glycoprotein Ib beta chain; CD42c; GPIb-beta; GP-Ib beta; antigen CD42b-beta; nuclear localization signal deleted in velocardiofacial syndrome; BS; CD42C; GPIBB; BDPLT1;

Gene ID 2812

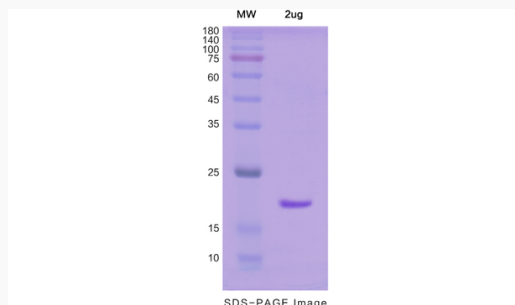
mRNA Refseq NM_000407

Protein Refseq NP_000398

MIM 138720

UniProt ID P13224

SDS-PAGE



Tel: 1-631-559-9269 1-516-512-3133

Email: info@creative-biomart.com Fax: 1-631-938-8127

45-1 Ramsey Road, Shirley, NY 11967, USA