

Recombinant Human GP1BB protein, hFc-tagged

Cat. No. GP1BB-674H Lot. No. (See product label)

SPECIFICATION

Product Overview	Recombinant Human GP1BB protein(P13224-1)(Pro27-Cys147), fused with C-terminal hFc tag, was expressed in HEK293.
Species	Human
Source	HEK293
ProteinLength	Pro27-Cys147
Tag	C-hFc
Form	Supplied as 0.22µm filtered solution in PBS (pH 7.4).
Molecular Mass	The protein has a predicted MW of 39.6 kDa. Due to glycosylation, the protein migrates to 47-50 kDa based on Tris-Bis PAGE result.
Endotoxin	Less than 1EU per µg by the LAL method.
Purity	> 95% as determined by Tris-Bis PAGE;> 95% as determined by HPLC
Storage	Valid for 12 months from date of receipt when stored at -80°C. Recommend to aliquot the protein into smaller quantities for optimal storage. Please do not repeated freeze-thaw cycles.
Reconstitution	It is recommended that sterile water be added to the vial to prepare a stock solution of

 Tel: 1-631-559-9269 1-516-512-3133

 Email: info@creative-biomart.com  Fax: 1-631-938-8127

 45-1 Ramsey Road, Shirley, NY 11967, USA

0.2 ug/ul. Centrifuge the vial at 4°C before opening to recover the entire contents.

GENE INFORMATION

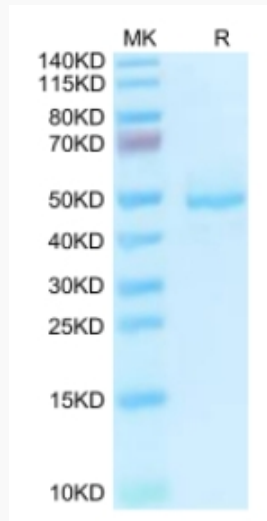
Gene Name	GP1BB glycoprotein Ib (platelet), beta polypeptide [Homo sapiens]
Official Symbol	GP1BB
Synonyms	GP1BB; glycoprotein Ib (platelet), beta polypeptide; platelet glycoprotein Ib beta chain; CD42c; GPIb-beta; GP-Ib beta; antigen CD42b-beta; nuclear localization signal deleted in velocardiofacial syndrome; BS; CD42C; GPIBB; BDPLT1;
Gene ID	2812
mRNA Refseq	NM_000407
Protein Refseq	NP_000398
MIM	138720
UniProt ID	P13224

 Tel: 1-631-559-9269 1-516-512-3133

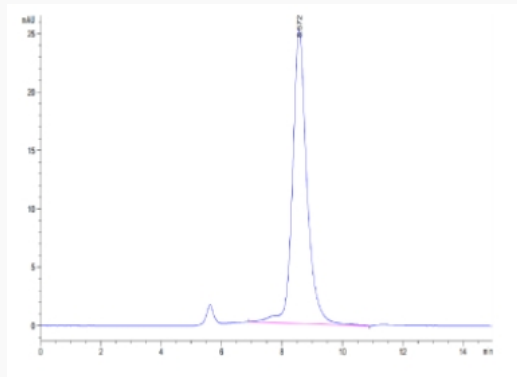
 Email: info@creative-biomart.com  Fax: 1-631-938-8127

 45-1 Ramsey Road, Shirley, NY 11967, USA

Tris-Bis PAGE



SEC-HPLC



 Tel: 1-631-559-9269 1-516-512-3133

 Email: info@creative-biomart.com  Fax: 1-631-938-8127

 45-1 Ramsey Road, Shirley, NY 11967, USA