

## Recombinant Mouse GP2 Protein (22-531 aa), His-tagged

Cat. No. GP2-2509M Lot. No. (See product label)

### SPECIFICATION

**Product Overview** Recombinant Mouse GP2 Protein (22-531 aa) is produced by Yeast expression system. This protein is fused with a 6xHis tag at the N-terminal. Protein Description: Full Length of Mature Protein.

**Species** Mouse

**Source** Yeast

**ProteinLength** 22-531 aa

**Form** Tris-based buffer, 50% glycerol

**Molecular Mass** 59.0 kDa

#### AA Sequence

STIHQGYGRPRNSSNLDLDCGSPDSPSSGICFDPCQNHTVLNDPTRSTENNDSSVA  
 WCDDNLHGWYRFVGDGGVKMPETCVSVFRCHTSAPMWLWLSGSHPI LGD GIVSHTA  
 CANWNENCCFWRSEVQVKACSEELGEYHVYKLGQTPECSLRYCTDPSTAPKNCEI  
 TCRPEEECVFQNNNWSCVCRQDLHVSDSQSLQPLLDCGDNEIKVKLDKCLLGGMG  
 FKEEIIAYLNDRNCNGTMQDEPNWVSM TSPV VANYCGNILEKNGTHAIYRNTLSLA  
 TDFIIRDFRVNVNFQCA YPLDMSVSLETALQPIVSSLTVDVDGAGEFNVKMALFQDQ  
 SYTNPYEGAEVLLPVESILYVGVLLNRGDTSRFKLLLTNCYATPSEDRHDPVKYFIKN  
 RCPNQ RDSTINVRENGVSSSRFSVQMFMFAGNYDLVFLHCEVYLC DSTTEQCQP  
 SCSTNRLRSSRPAIDYNRVLDLGPITKRSAQSSATSKGTPHTTGFL LAWPMFFLPVF  
 LALLF

 Tel: 1-631-559-9269 1-516-512-3133

 Email: [info@creative-biomart.com](mailto:info@creative-biomart.com)  Fax: 1-631-938-8127

 45-1 Ramsey Road, Shirley, NY 11967, USA

<b>Purity</b>	> 85% as determined by SDS-PAGE.
<b>Notes</b>	Repeated freezing and thawing is not recommended. Store working aliquots at 4 centigrade for up to one week.
<b>Storage</b>	The shelf life is related to many factors, storage state, buffer ingredients, storage temperature and the stability of the protein itself. Generally, the shelf life of liquid form is 6 months at -20 centigrade/-80 centigrade. The shelf life of lyophilized form is 12 months at -20 centigrade/-80 centigrade.
<b>Concentration</b>	A hardcopy of COA will be sent along with the products. Please refer to it for detailed information.

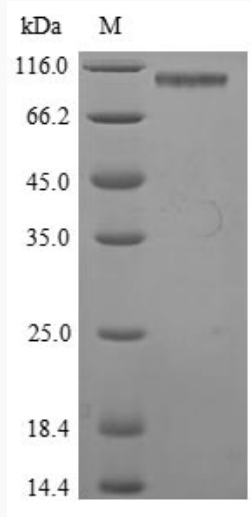
## GENE INFORMATION

<b>Gene Name</b>	Gp2 glycoprotein 2 (zymogen granule membrane) [ <i>Mus musculus</i> ]
<b>Official Symbol</b>	GP2
<b>Synonyms</b>	GP2; glycoprotein 2 (zymogen granule membrane); AV060639; 2310037118Rik; MGC141315;
<b>Gene ID</b>	67133
<b>mRNA Refseq</b>	NM_025989
<b>Protein Refseq</b>	NP_080265
<b>UniProt ID</b>	Q9D733

 Tel: 1-631-559-9269 1-516-512-3133

 Email: [info@creative-biomart.com](mailto:info@creative-biomart.com)  Fax: 1-631-938-8127

 45-1 Ramsey Road, Shirley, NY 11967, USA



(Tris-Glycine gel) Discontinuous SDS-PAGE (reduced) with 5% enrichment gel and 15% separation gel.

 Tel: 1-631-559-9269 1-516-512-3133

 Email: [info@creative-biomart.com](mailto:info@creative-biomart.com)  Fax: 1-631-938-8127

 45-1 Ramsey Road, Shirley, NY 11967, USA