

Recombinant Human GP2 Protein (Phe307-Asn512), N-His tagged

Cat. No. GP2-2621H Lot. No. (See product label)

SPECIFICATION

Product Overview	Recombinant human GP2 (Phe307-Asn512) protein fused with the N-His tag was expressed in E. coli.
Species	Human
Source	E.coli
ProteinLength	Phe307-Asn512
Molecular Mass	25.38 kDa
Purity	>90 % as determined by SDS-PAGE.
Notes	For research use only.
Storage	Use a manual defrost freezer and avoid repeated freeze thaw cycles. Store at 2 to 8 centigrade for one week. Store at -20 to -80 centigrade for twelve months from the date of receipt.
Storage Buffer	0.01M PBS, pH 7.4, 0.02 % NLS
Reconstitution	Reconstitute in sterile water for a stock solution.
Shipping	In general, proteins are provided as lyophilized powder/frozen liquid. They are

 Tel: 1-631-559-9269 1-516-512-3133

 Email: info@creative-biomart.com  Fax: 1-631-938-8127

 45-1 Ramsey Road, Shirley, NY 11967, USA

shipped out with dry ice/blue ice unless customers require otherwise.

GENE INFORMATION

Gene Name GP2 glycoprotein 2 (zymogen granule membrane) [Homo sapiens (human)]

Official Symbol GP2

Synonyms GP2; glycoprotein 2 (zymogen granule membrane); pancreatic secretory granule membrane major glycoprotein GP2; pancreatic zymogen granule membrane protein GP-2; pancreatic zymogen granule membrane associated protein GP2; ZAP75; DKFZp779K0533;

Gene ID 2813

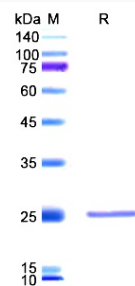
mRNA Refseq NM_001007240

Protein Refseq NP_001007241

MIM 602977

UniProt ID P55259

SDS-PAGE



Tel: 1-631-559-9269 1-516-512-3133

Email: info@creative-biomart.com Fax: 1-631-938-8127

45-1 Ramsey Road, Shirley, NY 11967, USA