

Recombinant Mouse GP6 Protein (22-265 aa), His-SUMO-tagged

Cat. No. GP6-2611M **Lot. No.** (See product label)

SPECIFICATION

Product Overview	Recombinant Mouse GP6 Protein (22-265 aa) is produced by E. coli expression system. This protein is fused with a 6xHis-SUMO tag at the N-terminal. Protein Description: Partial.
Species	E.coli
Source	E.coli
ProteinLength	22-265 aa
Form	Tris-based buffer,50% glycerol
Molecular Mass	43.0 kDa
AA Sequence	QSGPLPKPSLQAQPSSLVPLGQSVILRCQGPPDVDLYRLEKLEKPEKYEDQDFLFIPT MERSNAGRYRCSYQNGSHWSLPSDQLELIATGVYAKPSSLSAHPSSAVPQGRDVTL KCQSPYSFDEFVLYKEGDTGSYKRPEKWYRANFPIITVTAHSGTYRCYSFSSSSPY LWSAPSDPLVLVVTGLSATPSQVPTEESFPVTESSRRPSILPTNKISTTEKPMNITAS PEGLSPPFGFAHQHYAK
Purity	> 85% as determined by SDS-PAGE.
Notes	Repeated freezing and thawing is not recommended. Store working aliquots at 4 centigrade for up to one week.

 Tel: 1-631-559-9269 1-516-512-3133

 Email: info@creative-biomart.com  Fax: 1-631-938-8127

 45-1 Ramsey Road, Shirley, NY 11967, USA

Storage The shelf life is related to many factors, storage state, buffer ingredients, storage temperature and the stability of the protein itself. Generally, the shelf life of liquid form is 6 months at -20 centigrade/-80 centigrade. The shelf life of lyophilized form is 12 months at -20 centigrade/-80 centigrade.

Concentration A hardcopy of COA will be sent along with the products. Please refer to it for detailed information.

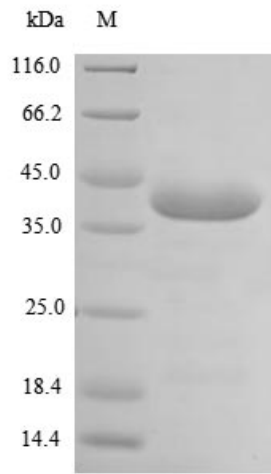
GENE INFORMATION

Gene Name	Gp6 glycoprotein 6 (platelet) [<i>Mus musculus</i>]
Official Symbol	GP6
Synonyms	GP6; glycoprotein 6 (platelet); platelet glycoprotein VI; glycoprotein 5; Gpvi; Gm469; 9830166G18Rik;
Gene ID	243816
mRNA Refseq	NM_001163014
Protein Refseq	NP_001156486
UniProt ID	P0C191

 Tel: 1-631-559-9269 1-516-512-3133

 Email: info@creative-biomart.com  Fax: 1-631-938-8127

 45-1 Ramsey Road, Shirley, NY 11967, USA



(Tris-Glycine gel) Discontinuous SDS-PAGE (reduced) with 5% enrichment gel and 15% separation gel.

 Tel: 1-631-559-9269 1-516-512-3133

 Email: info@creative-biomart.com  Fax: 1-631-938-8127

 45-1 Ramsey Road, Shirley, NY 11967, USA