

Recombinant Human GP9 Protein, Myc/DDK-tagged, C13 and N15-labeled

Cat. No. GP9-823H **Lot. No.** (See product label)

SPECIFICATION

Product Overview	GP9 MS Standard C13 and N15-labeled recombinant protein (NP_000165) with a C-terminal MYC/DDK tag, was expressed in HEK293 cells.
Species	Human
Source	HEK293
Description	This gene encodes a small membrane glycoprotein found on the surface of human platelets. It forms a 1-to-1 noncovalent complex with glycoprotein Ib, a platelet surface membrane glycoprotein complex that functions as a receptor for von Willebrand factor. The complete receptor complex includes noncovalent association of the alpha and beta subunits with the protein encoded by this gene and platelet glycoprotein V. Defects in this gene are a cause of Bernard-Soulier syndrome, also known as giant platelet disease. These patients have unusually large platelets and have a clinical bleeding tendency.
Molecular Mass	19.1 kDa
AA Sequence	MPAWGALFLLWATAEATKDCPSPCTCRALETMGLWVDCRGGHGLTALPALPARTRH LLLANNLSLQSVPPGAFDHLPLQLQTLQNPWHCDSLTYLRLWLEDRTPEALLQV RCASPSLAAHGPLGRLTGYQLGSCGWQLQASWVRPGVLWDVALVTVAALGLALLA GLLCATTEALDTRTRPLEQKLISEEDLAANDILDYKDDDDKV
Purity	> 80% as determined by SDS-PAGE and Coomassie blue staining

 Tel: 1-631-559-9269 1-516-512-3133

 Email: info@creative-biomart.com  Fax: 1-631-938-8127

 45-1 Ramsey Road, Shirley, NY 11967, USA

Stability	Stable for 3 months from receipt of products under proper storage and handling conditions.
Storage	Store at -80 centigrade. Avoid repeated freeze-thaw cycles.
Concentration	50 µg/mL as determined by BCA
Storage Buffer	100 mM glycine, 25 mM Tris-HCl, pH 7.3.

GENE INFORMATION

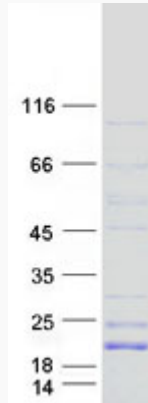
Gene Name	GP9 glycoprotein IX platelet [Homo sapiens (human)]
Official Symbol	GP9
Synonyms	GP9; glycoprotein IX (platelet); platelet glycoprotein IX; CD42a; GPIX; GP-IX; glycoprotein 9;
Gene ID	2815
mRNA Refseq	NM_000174
Protein Refseq	NP_000165
MIM	173515
UniProt ID	P14770

 Tel: 1-631-559-9269 1-516-512-3133

 Email: info@creative-biomart.com  Fax: 1-631-938-8127

 45-1 Ramsey Road, Shirley, NY 11967, USA

SDS-PAGE



 Tel: 1-631-559-9269 1-516-512-3133

 Email: info@creative-biomart.com  Fax: 1-631-938-8127

 45-1 Ramsey Road, Shirley, NY 11967, USA