

Recombinant Human GPA33 protein, His-Avi-tagged

Cat. No. GPA33-790H Lot. No. (See product label)

SPECIFICATION

Product Overview	Recombinant Human GPA33 protein(Q99795-1)(Ile22-Val235), fused with C-terminal His and Avi tag, was expressed in HEK293.
Species	Human
Source	HEK293
ProteinLength	Ile22-Val235
Tag	C-His-Avi
Form	Lyophilized from 0.22µm filtered solution in PBS (pH 7.4). Normally 5% trehalose is added as protectant before lyophilization.
Bio-activity	Immobilized Human GPA33, His Tag at 1µg/ml (100µl/well) on the plate. Dose response curve for Anti-GPA33 Antibody, hFc Tag with the EC50 of 4.8ng/ml determined by ELISA.
Molecular Mass	The protein has a predicted MW of 26.5 kDa. Due to glycosylation, the protein migrates to 28-40 kDa based on Tris-Bis PAGE result.
Endotoxin	Less than 1EU per µg by the LAL method.
Purity	> 95% as determined by Tris-Bis PAGE; > 95% as determined by HPLC

 Tel: 1-631-559-9269 1-516-512-3133

 Email: info@creative-biomart.com  Fax: 1-631-938-8127

 45-1 Ramsey Road, Shirley, NY 11967, USA

Storage Reconstituted protein stable at -80°C for 12 months, 4°C for 1 week. Use a manual defrost freezer and avoid repeated freeze-thaw cycles.

Reconstitution Centrifuge tubes before opening. Reconstituting to a concentration more than 100 µg/ml is recommended. Dissolve the lyophilized protein in distilled water.

GENE INFORMATION

Gene Name GPA33 glycoprotein A33 (transmembrane) [Homo sapiens]

Official Symbol GPA33

Synonyms GPA33; glycoprotein A33 (transmembrane); cell surface A33 antigen; A33; transmembrane glycoprotein A33; MGC129986; MGC129987;

Gene ID 10223

mRNA Refseq NM_005814

Protein Refseq NP_005805

MIM 602171

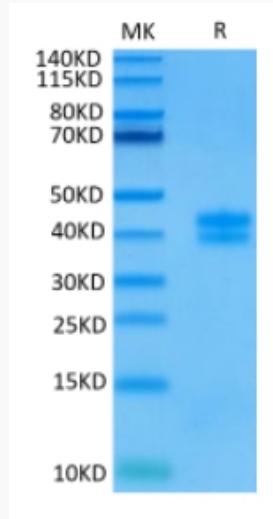
UniProt ID Q99795

 Tel: 1-631-559-9269 1-516-512-3133

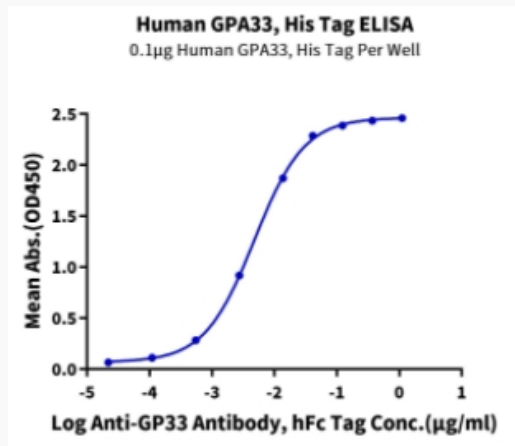
 Email: info@creative-biomart.com  Fax: 1-631-938-8127

 45-1 Ramsey Road, Shirley, NY 11967, USA

Tris-Bis PAGE



ELISA Data



 Tel: 1-631-559-9269 1-516-512-3133

 Email: info@creative-biomart.com  Fax: 1-631-938-8127

 45-1 Ramsey Road, Shirley, NY 11967, USA