

Recombinant Human GPAA1 Protein, GST-tagged

Cat. No. GPAA1-5137H Lot. No. (See product label)

SPECIFICATION

Product Overview	Human GPAA1 full-length ORF (AAH04129, 1 a.a. - 621 a.a.) recombinant protein with GST-tag at N-terminal.
Species	Human
Source	Wheat Germ
Description	<p>Posttranslational glycosylphosphatidylinositol (GPI) anchor attachment serves as a general mechanism for linking proteins to the cell surface membrane. The protein encoded by this gene presumably functions in GPI anchoring at the GPI transfer step. The mRNA transcript is ubiquitously expressed in both fetal and adult tissues. The anchor attachment protein 1 contains an N-terminal signal sequence, 1 cAMP- and cGMP-dependent protein kinase phosphorylation site, 1 leucine zipper pattern, 2 potential N-glycosylation sites, and 8 putative transmembrane domains. [provided by RefSeq]</p>
Molecular Mass	94.05 kDa
AA Sequence	<p>MGLLSDPVRRRALARLVLRNLNAPLCVLSYVAGIAWFLALVFPPLTQRTYMSNAMGS TMVEEQFAGGDRARAFARDFAAHRKKSGALPVAWLERTMQSVGLEVYTQSFSRKL PFPDETHERYMVSGTENVYGILRAPRAASTESLVLTVPCGSDSTNSQAVGLLLALAAH FRGQIYWAKDIVFLVTEHDLLGTEAWLEAYHDVNVVTGMQSSPLQGRAGAIQAAVAL ELSSDVVTSLDVAVEGLNGQLPNLDDLNLNFQTFQKGGLLCTLQGKLQPEDWTSLD GPLQGLQTLMLMVLQRQASGRPHGSHGLFLRYRVEALTLRGINSFRQYKYDLVAVGK</p>

 Tel: 1-631-559-9269 1-516-512-3133

 Email: info@creative-biomart.com  Fax: 1-631-938-8127

 45-1 Ramsey Road, Shirley, NY 11967, USA

ALEGMFRKLNHLLERLHQSFLLYLLPGLSRFVSIGLYMPAVGFLLLVLGLKALELWMQ
 LHEAGMGLEEPGGAPGPSVPLPPSQGVGLASLVAPLLISQAMGLALYVLPVLGQHV
 ATQHFPVAEAEAVVLTLLAIYAAGLALPHNTHRVVSTQAPDRGWMALKLVALIYLALQ
 LGCIALTNFSLGFLATTMVPTAALAKPHGPRTLYAALLVLTSPAATLLGSLFLWRELQ
 EAPLSLAEGWQLFLAALAQGVLEHHTYGALLFLLSLGLYPCWLLFWNVLFWK

Applications
 Enzyme-linked Immunoabsorbent Assay
 Western Blot (Recombinant protein)
 Antibody Production
 Protein Array

Notes Best use within three months from the date of receipt of this protein.

Storage Store at -80 centigrade. Aliquot to avoid repeated freezing and thawing.

Storage Buffer 50 mM Tris-HCl, 10 mM reduced Glutathione, pH=8.0 in the elution buffer.

GENE INFORMATION

Gene Name [GPAA1 glycosylphosphatidylinositol anchor attachment protein 1 homolog \(yeast\) \[Homo sapiens \]](#)

Official Symbol [GPAA1](#)

Synonyms GPAA1; glycosylphosphatidylinositol anchor attachment protein 1 homolog (yeast); anchor attachment protein 1 (Gaa1p, yeast) homolog, GPAA1P anchor attachment protein 1 homolog (yeast); glycosylphosphatidylinositol anchor attachment 1 protein; GAA1; GPI transamidase subunit; hGAA1; GAA1 protein homolog; GPI anchor attachment protein 1; GPAA1P anchor attachment protein 1 homolog; glycoposphatidylinositol anchor attachment 1; anchor attachment protein 1 (Gaa1p, yeast) homolog;

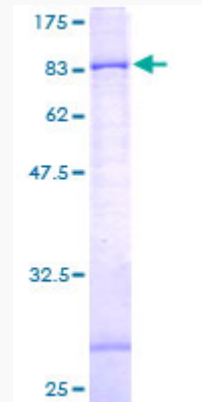
 Tel: 1-631-559-9269 1-516-512-3133

 Email: info@creative-biomart.com  Fax: 1-631-938-8127

 45-1 Ramsey Road, Shirley, NY 11967, USA

Gene ID	8733
mRNA Refseq	NM_003801
Protein Refseq	NP_003792
MIM	603048
UniProt ID	O43292

**Quality Control
Testing**



12.5% SDS-PAGE Stained with Coomassie Blue.

 Tel: 1-631-559-9269 1-516-512-3133

 Email: info@creative-biomart.com  Fax: 1-631-938-8127

 45-1 Ramsey Road, Shirley, NY 11967, USA