

## Recombinant Human GPATCH2 Protein, GST-tagged

Cat. No. GPATCH2-5140H Lot. No. (See product label)

### SPECIFICATION

<b>Product Overview</b>	Human GPATCH2 full-length ORF ( AAH63474.1, 1 a.a. - 376 a.a.) recombinant protein with GST-tag at N-terminal.
<b>Species</b>	Human
<b>Source</b>	Wheat Germ
<b>Description</b>	The gene encodes a nuclear factor that may play a role in spermatogenesis and in tumor growth during breast cancer. The encoded protein contains a G-patch domain with an RNA binding motif. Alternative splicing results in multiple transcript variants. [provided by RefSeq, Feb 2017]
<b>Molecular Mass</b>	69 kDa
<b>AA Sequence</b>	<p>MFGAAGRQPIGAPAAGNSWHFSRTMEELVHDLVSALEESSEQARGGFAETGDHSR  SISCPLKRQARKRRGRKRRSYNVHHPWETGHCLSEGSDSSLEEPSKDYRENHNNN  KKDHSDSDQMLVAKRRPSSNLNNNVRGKRPLWHESDFAVDNVGNRTLRRRRKV  KRMAVDLPQDISNKRTMTQPPEGCRDQDMSDRAYQYQEFTKNKVKKRKLKIIRQA  PKIQDEGVVLESEETNQTNKDKMECEEQKVSDELMSSESDSSLSSTDAGLFTNDEG  RQGDDEQSDWFYEKESGGACGITGVVPWWEKEDPTELDKNVPDPVFESILTGSFP  LMSHPSRRGFQARLSRLHGMSSKNIKKSGGTPTSMATNWTSEIPL</p>
<b>Applications</b>	<p>Enzyme-linked Immunoabsorbent Assay  Western Blot (Recombinant protein)  Antibody Production</p>

 Tel: 1-631-559-9269 1-516-512-3133

 Email: [info@creative-biomart.com](mailto:info@creative-biomart.com)  Fax: 1-631-938-8127

 45-1 Ramsey Road, Shirley, NY 11967, USA

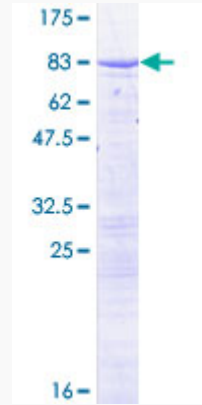
	Protein Array
<b>Notes</b>	Best use within three months from the date of receipt of this protein.
<b>Storage</b>	Store at -80 centigrade. Aliquot to avoid repeated freezing and thawing.
<b>Storage Buffer</b>	50 mM Tris-HCl, 10 mM reduced Glutathione, pH=8.0 in the elution buffer.
<b>GENE INFORMATION</b>	
<b>Gene Name</b>	GPATCH2 G patch domain containing 2 [ Homo sapiens ]
<b>Official Symbol</b>	GPATCH2
<b>Synonyms</b>	GPATCH2; G patch domain containing 2; GPATC2; G patch domain-containing protein 2; cancer/testis antigen 110; CT110; FLJ10252; PPP1R30; protein phosphatase 1; regulatory subunit 30; protein phosphatase 1, regulatory subunit 30; FLJ21048; MGC74998; RP11-361K17.1;
<b>Gene ID</b>	55105
<b>mRNA Refseq</b>	NM_018040
<b>Protein Refseq</b>	NP_060510
<b>MIM</b>	616836
<b>UniProt ID</b>	Q9NW75

 Tel: 1-631-559-9269 1-516-512-3133

 Email: [info@creative-biomart.com](mailto:info@creative-biomart.com)  Fax: 1-631-938-8127

 45-1 Ramsey Road, Shirley, NY 11967, USA

**Quality Control  
Testing**



12.5% SDS-PAGE Stained with Coomassie Blue.

 Tel: 1-631-559-9269 1-516-512-3133

 Email: [info@creative-biomart.com](mailto:info@creative-biomart.com)  Fax: 1-631-938-8127

 45-1 Ramsey Road, Shirley, NY 11967, USA