

# Recombinant Human GPATCH3 Protein, Myc/DDK-tagged, C13 and N15-labeled

**Cat. No.** GPATCH3-4622H    **Lot. No.** (See product label)

## SPECIFICATION

### Product Overview

GPATCH3 MS Standard C13 and N15-labeled recombinant protein (NP\_071361) with a C-terminal MYC/DDK tag, was expressed in HEK293 cells.

### Species

Human

### Source

HEK293

### Description

GPATCH3 (G-Patch Domain Containing 3) is a Protein Coding gene. Diseases associated with GPATCH3 include Corneal Edema. Gene Ontology (GO) annotations related to this gene include nucleic acid binding.

### Molecular Mass

59.3 kDa

### AA Sequence

MAVPGEAEEEEATVYLVVSGIPSVLRS AHLRSYFSQFREERGGGFLCFHYRHRPERA  
 PPQAAPNSALIPTDPAAEGQLLSQTSATDVRPLSTRDSTPIQTRTCCCVISVRGLAQA  
 QRLIRMYSGRRWLD SHGTWLPGRCLIRRLRLPTEASGLGSFPFKTRKELQSWKAEN  
 EAFTLADLKQLPELNPPVLMPRGNVGTPLRVFLELIRACRLPPRIITQLQLQFPKTGSS  
 RRYGNVPFEYEDSETVEQEELVYTAEGEEIPQGTYLADIPASPCGEPEEEVVGKEEEE  
 ESHSDEDDDRGEEWERHEALHEDVTGQERTTEQLFEEIEIKWEKGGSGLVFYTD  
 AQFWQEEEGDFDEQTADDWDVDM SVYYDRDGGDKDARD SVQMRLEQLRDLGQE  
 DGSVIERQVGT FERHTKIGIRKVMERQGWAEQGGLGCRCSGVPEALDSDGQHPR  
 CKRGLGYHGEK LQPFGLKRP RRNGLGLISTIYDEPLPQDQTESLLRRQPPTSMKF  
 RTDMAFVRGSSCASDSPSLPDTRTRPLEQKLISEEDLAANDILDYKDDDDKV

 Tel: 1-631-559-9269    1-516-512-3133

 Email: [info@creative-biomart.com](mailto:info@creative-biomart.com)     Fax: 1-631-938-8127

 45-1 Ramsey Road, Shirley, NY 11967, USA

<b>Purity</b>	> 80% as determined by SDS-PAGE and Coomassie blue staining
<b>Stability</b>	Stable for 3 months from receipt of products under proper storage and handling conditions.
<b>Storage</b>	Store at -80 centigrade. Avoid repeated freeze-thaw cycles.
<b>Concentration</b>	50 µg/mL as determined by BCA
<b>Storage Buffer</b>	100 mM glycine, 25 mM Tris-HCl, pH 7.3.

## GENE INFORMATION

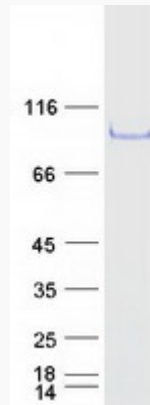
<b>Gene Name</b>	GPATCH3 G patch domain containing 3 [ Homo sapiens (human) ]
<b>Official Symbol</b>	GPATCH3
<b>Synonyms</b>	GPATCH3; G patch domain containing 3; GPATC3; G patch domain-containing protein 3; FLJ12455; DKFZp686E0221;
<b>Gene ID</b>	63906
<b>mRNA Refseq</b>	NM_022078
<b>Protein Refseq</b>	NP_071361
<b>MIM</b>	617486
<b>UniProt ID</b>	Q96I76

 Tel: 1-631-559-9269 1-516-512-3133

 Email: [info@creative-biomart.com](mailto:info@creative-biomart.com)  Fax: 1-631-938-8127

 45-1 Ramsey Road, Shirley, NY 11967, USA

**SDS-PAGE**



 Tel: 1-631-559-9269 1-516-512-3133

 Email: [info@creative-biomart.com](mailto:info@creative-biomart.com)  Fax: 1-631-938-8127

 45-1 Ramsey Road, Shirley, NY 11967, USA