

Recombinant Human GPATCH3 Protein, GST-tagged

Cat. No. GPATCH3-5141H Lot. No. (See product label)

SPECIFICATION

Product Overview	Human GPATCH3 full-length ORF (AAH07767.1, 1 a.a. - 525 a.a.) recombinant protein with GST-tag at N-terminal.
Species	Human
Source	Wheat Germ
Description	GPATCH3 (G-Patch Domain Containing 3) is a Protein Coding gene. GO annotations related to this gene include nucleic acid binding.
Molecular Mass	85.7 kDa
AA Sequence	<p>MAVPGEAEEEEATVYLVVSGIPSVLRSAPHLRSYFSQFREERGGGFLCFHYRHRPERA PPQAAPNSALIPTDPAAEGQLLSQTSATDVRPLSTRDSTPIQTRTCCCVISVRGLAQA QRLIRMYSGRRWLD SHGTWLPGRCLIRRLRLPTEASGLGSFPFKTRKELQSWKAEN EAFTLADLKQLPELNPPVLMPRGNVGTPLRVFLELIRACRLPPRIITQLQLQFPKTGSS RRYGNVPFEYEDSETVEQEELVYTAEGEEIPQGTYLADIPASPCGEPEEEVVGKEEEE ESHSDDEDDRRGEEWERHEALHEDVTGQERTTEQLFEEIEIKWEKGGSGLVFYTD AQFWQEEEGDFDEQTADDWDVDM SVYYDRDGGDKDARD SVQMRLEQLRDLGQE DGSVIERQVGT FERHTKIGIRKVMERQGWAEQQGLGCRCSGVPEALDSDGQHPR CKRGLGYHGEKLPFGQLKRPRRNLGLISTIYDEPLPQDQTESLLRRQPPTSMKF RTDMAFVRGSSCASDSPSLPD</p>
Applications	Enzyme-linked Immunoabsorbent Assay Western Blot (Recombinant protein)

 Tel: 1-631-559-9269 1-516-512-3133

 Email: info@creative-biomart.com  Fax: 1-631-938-8127

 45-1 Ramsey Road, Shirley, NY 11967, USA

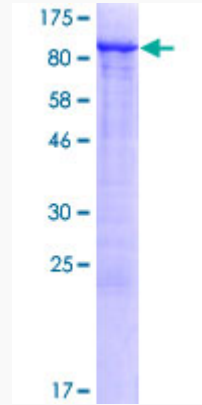
	Antibody Production Protein Array
Notes	Best use within three months from the date of receipt of this protein.
Storage	Store at -80 centigrade. Aliquot to avoid repeated freezing and thawing.
Storage Buffer	50 mM Tris-HCl, 10 mM reduced Glutathione, pH=8.0 in the elution buffer.
GENE INFORMATION	
Gene Name	GPATCH3 G patch domain containing 3 [Homo sapiens]
Official Symbol	GPATCH3
Synonyms	GPATCH3; G patch domain containing 3; GPATC3; G patch domain-containing protein 3; FLJ12455; DKFZp686E0221;
Gene ID	63906
mRNA Refseq	NM_022078
Protein Refseq	NP_071361
MIM	617486
UniProt ID	Q96I76

 Tel: 1-631-559-9269 1-516-512-3133

 Email: info@creative-biomart.com  Fax: 1-631-938-8127

 45-1 Ramsey Road, Shirley, NY 11967, USA

**Quality Control
Testing**



12.5% SDS-PAGE Stained with Coomassie Blue.

 Tel: 1-631-559-9269 1-516-512-3133

 Email: info@creative-biomart.com  Fax: 1-631-938-8127

 45-1 Ramsey Road, Shirley, NY 11967, USA