

## Recombinant Human GPATCH4 protein, His&Myc-tagged

Cat. No. GPATCH4-2564H Lot. No. (See product label)

### SPECIFICATION

<b>Product Overview</b>	Recombinant Human GPATCH4 protein(Q5T3I0)(1-190aa), fused with N-terminal His tag and C-terminal Myc tag, was expressed in E.coli.
<b>Species</b>	Human
<b>Source</b>	E.coli
<b>ProteinLength</b>	1-190a.a.
<b>Tag</b>	His&Myc
<b>Form</b>	If the delivery form is liquid, the default storage buffer is Tris/PBS-based buffer, 5%-50% glycerol. If the delivery form is lyophilized powder, the buffer before lyophilization is Tris/PBS-based buffer, 6% Trehalose, pH 8.0.
<b>Molecular Mass</b>	28.6 kDa
<b>Purity</b>	Greater than 90% as determined by SDS-PAGE.
<b>Storage</b>	Store at -20°C/-80°C upon receipt, aliquoting is necessary for mutiple use. Avoid repeated freeze-thaw cycles.
<b>Reconstitution</b>	We recommend that this vial be briefly centrifuged prior to opening to bring the contents to the bottom. Please reconstitute protein in deionized sterile water to a concentration of 0.1-1.0 mg/mL.We recommend to add 5-50% of glycerol (final

 Tel: 1-631-559-9269 1-516-512-3133

 Email: [info@creative-biomart.com](mailto:info@creative-biomart.com)  Fax: 1-631-938-8127

 45-1 Ramsey Road, Shirley, NY 11967, USA

concentration) and aliquot for long-term storage at -20°C/-80°C.

**AA Sequence**

MNVTPEVKSRGMKFAEEQLLKHWGTQGKGLGRKENGITQALRVTLKQDTHGVGHD  
PAKEFTNHHWWNELFNKTAANLVVETGQDGVQIRSLSKETTRYNHPKPNLLYQKFVK  
MATLTSGGEKPNKDLESCSDDDNQGSKSPKILTDEMLLQACEGRTAHKAARLGITM  
KAKLARLEAQEQAFRLARLKGQDP

**GENE INFORMATION**

**Gene Name** GPATCH4 G patch domain containing 4 [ Homo sapiens ]

**Official Symbol** GPATCH4

**Synonyms** GPATCH4; G patch domain containing 4; GPATC4; G patch domain-containing protein 4; DKFZP434F1735; FLJ20249;

**Gene ID** 54865

**mRNA Refseq** NM\_015590

**Protein Refseq** NP\_056405

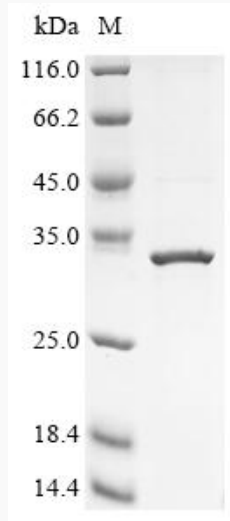
**UniProt ID** Q5T3I0

 Tel: 1-631-559-9269 1-516-512-3133

 Email: [info@creative-biomart.com](mailto:info@creative-biomart.com)  Fax: 1-631-938-8127

 45-1 Ramsey Road, Shirley, NY 11967, USA

**SDS-PAGE**



 Tel: 1-631-559-9269 1-516-512-3133

 Email: [info@creative-biomart.com](mailto:info@creative-biomart.com)  Fax: 1-631-938-8127

 45-1 Ramsey Road, Shirley, NY 11967, USA