

Recombinant Human GPBAR1 protein, His-KSI-tagged

Cat. No. GPBAR1-6874H **Lot. No.** (See product label)

SPECIFICATION

Product Overview	Recombinant Human GPBAR1 protein(Q8TDU6)(283-330aa), fused with N-terminal His and KSI tag, was expressed in E.coli.
Species	Human
Source	E.coli
ProteinLength	283-330a.a.
Tag	His-KSI
Form	If the delivery form is liquid, the default storage buffer is Tris/PBS-based buffer, 5%-50% glycerol. If the delivery form is lyophilized powder, the buffer before lyophilization is Tris/PBS-based buffer, 6% Trehalose, pH 8.0.
Molecular Mass	20.6 kDa
Purity	Greater than 85% as determined by SDS-PAGE.
Storage	Store at -20°C/-80°C upon receipt, aliquoting is necessary for mutiple use. Avoid repeated freeze-thaw cycles.
Reconstitution	We recommend that this vial be briefly centrifuged prior to opening to bring the contents to the bottom. Please reconstitute protein in deionized sterile water to a concentration of 0.1-1.0 mg/mL.We recommend to add 5-50% of glycerol (final

 Tel: 1-631-559-9269 1-516-512-3133

 Email: info@creative-biomart.com  Fax: 1-631-938-8127

 45-1 Ramsey Road, Shirley, NY 11967, USA

concentration) and aliquot for long-term storage at -20°C/-80°C.

AA Sequence GDQRYTAPWRAAAQRCLQGLWGRASRDSPGPSIAYHPSSQSSVDLDLN

GENE INFORMATION

Gene Name GPBAR1 G protein-coupled bile acid receptor 1 [Homo sapiens]

Official Symbol GPBAR1

Synonyms BG37; TGR5; M-BAR; GPCR19; GPR131

Gene ID 151306

mRNA Refseq NM_170699.2

Protein Refseq NP_733800.1

MIM 610147

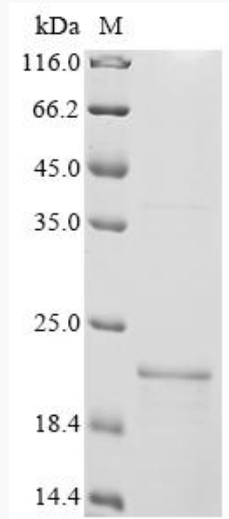
UniProt ID Q8TDU6

 Tel: 1-631-559-9269 1-516-512-3133

 Email: info@creative-biomart.com  Fax: 1-631-938-8127

 45-1 Ramsey Road, Shirley, NY 11967, USA

SDS-PAGE



 Tel: 1-631-559-9269 1-516-512-3133

 Email: info@creative-biomart.com  Fax: 1-631-938-8127

 45-1 Ramsey Road, Shirley, NY 11967, USA