

# Recombinant Human GPBP1 Protein (293-473 aa), His-SUMO-tagged

Cat. No. GPBP1-1056H Lot. No. (See product label)

## SPECIFICATION

<b>Product Overview</b>	Recombinant Human GPBP1 Protein (293-473 aa) is produced by E. coli expression system. This protein is fused with a 6xHis-SUMO tag at the N-terminal. Research Area: Transcription. Protein Description: Partial.
<b>Species</b>	Human
<b>Source</b>	E.coli
<b>ProteinLength</b>	293-473 aa
<b>Description</b>	Functions as a GC-rich promoter-specific transactivating transcription factor.
<b>Form</b>	Tris-based buffer, 50% glycerol
<b>Molecular Mass</b>	36.8 kDa
<b>AA Sequence</b>	MRTDKKSEFLKALKRDRVEEEHEDES RAGSEKDDDSFNLHNSNSTHQERDINRNFD ENEIPQENGNASVISQQIIRSSTFPQTDVLSSSLEAEHRLKEMGWQEDSENDETCA PLTEDEMREFQVISEQLQKNGLRKNGILKNGLICDFKFGPWKNSTFKPTTENDDTET SSSDTSDDDDV
<b>Purity</b>	> 90% as determined by SDS-PAGE.
<b>Notes</b>	Repeated freezing and thawing is not recommended. Store working aliquots at 4

 Tel: 1-631-559-9269 1-516-512-3133

 Email: [info@creative-biomart.com](mailto:info@creative-biomart.com)  Fax: 1-631-938-8127

 45-1 Ramsey Road, Shirley, NY 11967, USA

centigrade for up to one week.

**Storage**

The shelf life is related to many factors, storage state, buffer ingredients, storage temperature and the stability of the protein itself. Generally, the shelf life of liquid form is 6 months at -20 centigrade/-80 centigrade. The shelf life of lyophilized form is 12 months at -20 centigrade/-80 centigrade.

**Concentration**

A hardcopy of COA with concentration instruction is sent along with the products.

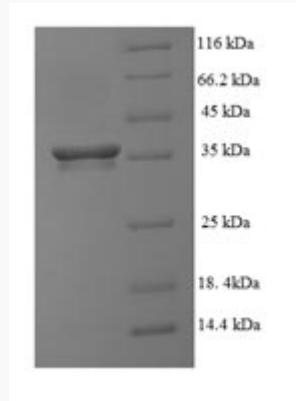
## GENE INFORMATION

<b>Gene Name</b>	GPBP1 GC-rich promoter binding protein 1 [ Homo sapiens ]
<b>Official Symbol</b>	GPBP1
<b>Synonyms</b>	GPBP1; vasculin; DKFZp761C169; GPBP; SSH6; VASCULIN; MGC126339;
<b>Gene ID</b>	65056
<b>mRNA Refseq</b>	NM_001127235
<b>Protein Refseq</b>	NP_001120707
<b>MIM</b>	608412
<b>UniProt ID</b>	Q86WP2

 Tel: 1-631-559-9269 1-516-512-3133

 Email: [info@creative-biomart.com](mailto:info@creative-biomart.com)  Fax: 1-631-938-8127

 45-1 Ramsey Road, Shirley, NY 11967, USA



(Tris-Glycine gel) Discontinuous SDS-PAGE (reduced) with 5% enrichment gel and 15% separation gel.

Tel: 1-631-559-9269 1-516-512-3133

Email: [info@creative-biomart.com](mailto:info@creative-biomart.com) Fax: 1-631-938-8127

45-1 Ramsey Road, Shirley, NY 11967, USA