

Recombinant Human GPBP1 Protein, Myc/DDK-tagged, C13 and N15-labeled

Cat. No. GPBP1-4804H Lot. No. (See product label)

SPECIFICATION

Product Overview

GPBP1 MS Standard C13 and N15-labeled recombinant protein (NP_075064) with a C-terminal MYC/DDK tag, was expressed in HEK293 cells.

Species

Human

Source

HEK293

Description

This gene was originally isolated by subtractive hybridization of cDNAs expressed in atherosclerotic plaques with a thrombus, and was found to be expressed only in vascular smooth muscle cells. However, a shorter splice variant was found to be more ubiquitously expressed. This protein is suggested to play a role in the development of atherosclerosis. Studies in mice suggest that it may also function as a GC-rich promoter-specific trans-activating transcription factor. Several alternatively spliced transcript variants encoding different isoforms have been described for this gene.

Molecular Mass

53.3 kDa

AA Sequence

MAQHDFAPAWLNFPTPPSSTKSSLNFEKHSENAWNTENRYDVNRRRHNSSDGFDS
AIGRPNGGNFGRKEKNGWRTHGRNGTENINHRGGYHGGSSRSRSSFHAGKSQGL
HENNIPDNETGRKEDKREKQFEAEDFPNPEYEREPNHNKSLAAGVWEYPPNP
KSRAPRMLVIKKGNTKDLQLSGFPVVGNLPSQPVKNGTGPSVYKGLVPKPAAPPTK
PTQWKSQTKENKVGTSFPHESTFGVGNFNAFKSTAKNFSPSTNSVKECNRSNSSF
PVDKLNQQPRLTKLTRMRTDKKSEFLKALKRDRVEEEHEDES RAGSEKDDDSFNLH

 Tel: 1-631-559-9269 1-516-512-3133

 Email: info@creative-biomart.com  Fax: 1-631-938-8127

 45-1 Ramsey Road, Shirley, NY 11967, USA

NSNSTHQERDINRNFDENEIPQENGNASVISQQIIRSSTFPQTDVLSSSLEAEHRLK
 EMGWQEDSENDETCAPLTEDEMREFQVISEQLQKNGLRKNGILKNGLICDFKFGPW
 KNSTFKPTTENDDTETSSSDTSDDDDVTRTRPLEQKLISEEDLAANDILDYKDDDDK
 V

Purity > 80% as determined by SDS-PAGE and Coomassie blue staining

Stability Stable for 3 months from receipt of products under proper storage and handling conditions.

Storage Store at -80 centigrade. Avoid repeated freeze-thaw cycles.

Concentration 50 µg/mL as determined by BCA

Storage Buffer 100 mM glycine, 25 mM Tris-HCl, pH 7.3.

GENE INFORMATION

Gene Name [GPBP1 GC-rich promoter binding protein 1 \[Homo sapiens \(human\) \]](#)

Official Symbol [GPBP1](#)

Synonyms GPBP1; GC-rich promoter binding protein 1; vasculin; DKFZp761C169; vascular wall-linked protein; GPBP; SSH6; VASCULIN; MGC126339;

Gene ID [65056](#)

mRNA Refseq [NM_022913](#)

Protein Refseq [NP_075064](#)

 Tel: 1-631-559-9269 1-516-512-3133

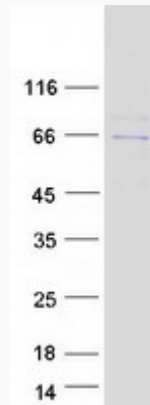
 Email: info@creative-biomart.com  Fax: 1-631-938-8127

 45-1 Ramsey Road, Shirley, NY 11967, USA

MIM 608412

UniProt ID Q86WP2

SDS-PAGE



 Tel: 1-631-559-9269 1-516-512-3133

 Email: info@creative-biomart.com  Fax: 1-631-938-8127

 45-1 Ramsey Road, Shirley, NY 11967, USA