

Recombinant Human GPBP1L1 Protein, Myc/DDK-tagged, C13 and N15-labeled

Cat. No. GPBP1L1-6519H **Lot. No.** (See product label)

SPECIFICATION

Product Overview

GPBP1L1 MS Standard C13 and N15-labeled recombinant protein (NP_067652) with a C-terminal MYC/DDK tag, was expressed in HEK293 cells.

Species

Human

Source

HEK293

Description

GPBP1L1 (GC-Rich Promoter Binding Protein 1 Like 1) is a Protein Coding gene. Gene Ontology (GO) annotations related to this gene include DNA-binding transcription factor activity. An important paralog of this gene is GPBP1.

Molecular Mass

52.3 kDa

AA Sequence

MAQHDFVPAWLNLFSTPQSAKSPTATFEKHGGEHLPRGEGRFGVSRRRHNSSDGFFN
 NGPLRTAGDSWHQPSLFRHDSVDSGVSKGAYAGITGNPSGWHSSSRGHGMSQR
 SGGGTGNHRHWNGSFHSRKGCFAEQEKPPMEIREEKEDKVEKLQFEEEDFPSLNP
 EAGKQHQPPCRPIGTPSGVWENPPSAKQPSKMLVIKKVSKEDPAAAFSAAFTSPGSH
 HANGNKLSSVPSVYKNLVPKPVPPSPKNAWKANRMEHKSGSLSSSRESAFTSPI
 SVTKPVVLASGAALSSPKESPSSTTPPIEISSSRLTKLTRRTDRKSEFLKTLKDDRN
 GDFSENRDCKLEDLEDNSTPEPKENGEEGCHQNGLALPVVEEGEVLSSHLEAEH
 RLLKAMGWQEYPENDENCLPLTEDELKEFHMKTEQLRRNGFGKNGFLQSRSSSLF
 SPWRSTCKAEFEDSDTETSSSETSDDDAWKTRTRPLEQKLISEEDLAANDILDYKDD
 DDKV

 Tel: 1-631-559-9269 1-516-512-3133

 Email: info@creative-biomart.com  Fax: 1-631-938-8127

 45-1 Ramsey Road, Shirley, NY 11967, USA

Purity	> 80% as determined by SDS-PAGE and Coomassie blue staining
Stability	Stable for 3 months from receipt of products under proper storage and handling conditions.
Storage	Store at -80 centigrade. Avoid repeated freeze-thaw cycles.
Concentration	50 µg/mL as determined by BCA
Storage Buffer	100 mM glycine, 25 mM Tris-HCl, pH 7.3.

GENE INFORMATION

Gene Name	GPBP1L1 GC-rich promoter binding protein 1 like 1 [Homo sapiens (human)]
Official Symbol	GPBP1L1
Synonyms	GPBP1L1; GC-rich promoter binding protein 1 like 1; SP192; vasculin-like protein 1
Gene ID	60313
mRNA Refseq	NM_021639
Protein Refseq	NP_067652
UniProt ID	Q9HC44

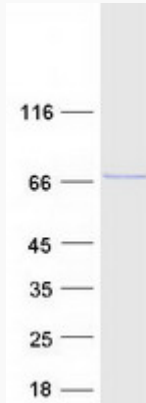
 Tel: 1-631-559-9269 1-516-512-3133

 Email: info@creative-biomart.com  Fax: 1-631-938-8127

 45-1 Ramsey Road, Shirley, NY 11967, USA



SDS-PAGE



Tel: 1-631-559-9269 1-516-512-3133

Email: info@creative-biomart.com Fax: 1-631-938-8127

45-1 Ramsey Road, Shirley, NY 11967, USA