

Recombinant LCMV GPC Protein, His tagged

Cat. No. GPC-01L Lot. No. (See product label)

SPECIFICATION

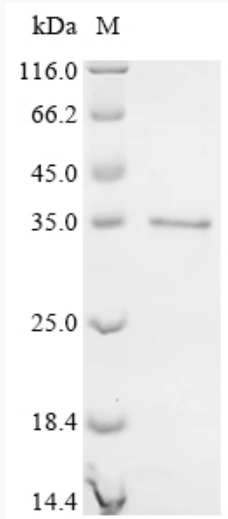
Species	LCMV
Source	E.coli
ProteinLength	266-498 aa
Storage	Store it under sterile conditions at -20 to -80 centigrade. It is recommended that the protein be aliquoted for optimal storage. Avoid repeated freeze-thaw cycles.
Molecular Mass	33.3 kDa
AA Sequence	GTFTWTLSDSSGVENPGGYCLTKWMILAAELKCFGNTAVAKCNVNHDAEFCMDLRL IDYNKAALSFKFEDVESALHLFKTTVNSLISDQLLMRNHLRDLMGVPCNYSKFWYL EHAKTGETSVPKCWLVTNGSYLNETHFSDQIEQEADNMITEMLRKDYIKRQGSTPLA LMDLLMFSTSAYLVSIFLHLVKIPTHRHIKGGSCPKPHRLTNKGICSCGAFKVPGVKT VWKRR
Purity	>90% by SDS-PAGE

 Tel: 1-631-559-9269 1-516-512-3133


 Email: info@creative-biomart.com  Fax: 1-631-938-8127

 45-1 Ramsey Road, Shirley, NY 11967, USA


SDS-PAGE



(Tris-Glycine gel) Discontinuous SDS-PAGE (reduced) with 5% enrichment gel and 15% separation gel.

 Tel: 1-631-559-9269 1-516-512-3133

 Email: info@creative-biomart.com  Fax: 1-631-938-8127

 45-1 Ramsey Road, Shirley, NY 11967, USA