

Recombinant LCMV GPC Transmembrane protein, His-SUMO-tagged

Cat. No. GPC-2427L **Lot. No.** (See product label)

SPECIFICATION

Product Overview	Recombinant LCMV GPC protein(P09991)(10-90aa), fused to N-terminal His-SUMO tag, was expressed in E. coli.
Species	LCMV
Source	E.coli
ProteinLength	10-90aa
Form	If the delivery form is liquid, the default storage buffer is Tris/PBS-based buffer, 5%-50% glycerol. If the delivery form is lyophilized powder, the buffer before lyophilization is Tris/PBS-based buffer, 6% Trehalose, pH 8.0.
Molecular Mass	24.9kDa
AA Sequence	ALPHIIDDEVINIVIIVLIVITGIKAVYNFATCGIFALISFLLLAGRSCGMYGLKGPDIYKGVYQFKSVEFDMSHLNLTMPN
Purity	Greater than 90% as determined by SDS-PAGE.
Storage	Store at -20°C/-80°C upon receipt, aliquoting is necessary for mutiple use. Avoid repeated freeze-thaw cycles.

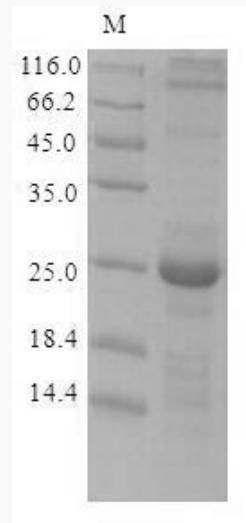
 Tel: 1-631-559-9269 1-516-512-3133

 Email: info@creative-biomart.com  Fax: 1-631-938-8127

 45-1 Ramsey Road, Shirley, NY 11967, USA

Reconstitution

Please reconstitute protein in deionized sterile water to a concentration of 0.1-1.0 mg/mL. We recommend to add 5-50% of glycerol (final concentration) and aliquot for long-term storage at -20°C/-80°C. Our default final concentration of glycerol is 50%.

SDS-PAGE

 Tel: 1-631-559-9269 1-516-512-3133

 Email: info@creative-biomart.com  Fax: 1-631-938-8127

 45-1 Ramsey Road, Shirley, NY 11967, USA