

Active Recombinant Human GPC1 protein, His-tagged

Cat. No. GPC1-1283H Lot. No. (See product label)

SPECIFICATION

Product Overview	Active Recombinant Human Glypican-1/GPC1 Protein is produced by HEK293 cells expression system. The target protein is expressed with sequence (Asp24-Gln527) of human Glypican 1 (Accession #NP_002072.1) fused with a 6xHis tag at the C-terminus.
Species	Human
Source	HEK293
ProteinLength	Asp24-Gln527
Form	Lyophilized from a 0.22 µm filtered solution of PBS, pH 7.4.
Bio-activity	Measured by its binding ability in a functional ELISA. Immobilized Human FGF2 at 1 µg/mL (100 µL/well) can bind Human Glypican 1 with a linear range of 2-80 ng/mL.
Molecular Mass	60 kDa
Purity	> 97% by SDS-PAGE.
Storage	Store the lyophilized protein at -20°C to -80 °C for long term. After reconstitution, the protein solution is stable at -20 °C for 3 months, at 2-8 °C for up to 1 week.
Reconstitution	Reconstitute to a concentration of 0.1-0.5 mg/mL in sterile distilled water.

 Tel: 1-631-559-9269 1-516-512-3133

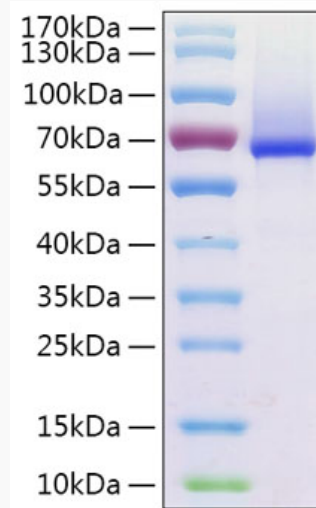
 Email: info@creative-biomart.com  Fax: 1-631-938-8127

 45-1 Ramsey Road, Shirley, NY 11967, USA

GENE INFORMATION

Gene Name	GPC1 glypican 1 [Homo sapiens]
Official Symbol	GPC1
Synonyms	GPC1; glypican 1; glypican-1; glypican; glypican proteoglycan 1; FLJ38078;
Gene ID	2817
mRNA Refseq	NM_002081
Protein Refseq	NP_002072
MIM	600395
UniProt ID	P35052

SDS-PAGE



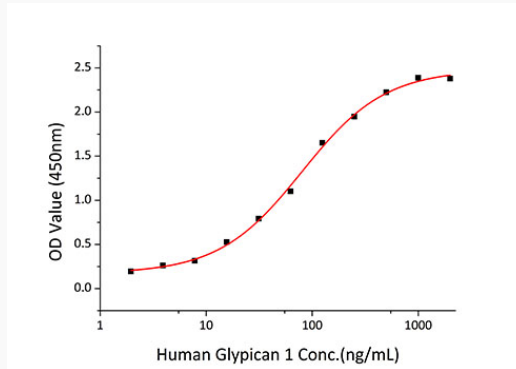
Tel: 1-631-559-9269 1-516-512-3133

Email: info@creative-biomart.com Fax: 1-631-938-8127

45-1 Ramsey Road, Shirley, NY 11967, USA



Activity



Tel: 1-631-559-9269 1-516-512-3133

Email: info@creative-biomart.com Fax: 1-631-938-8127

45-1 Ramsey Road, Shirley, NY 11967, USA