

Recombinant Human GPC1 protein, His-GST & Myc-tagged

Cat. No. GPC1-1430H Lot. No. (See product label)

SPECIFICATION

Product Overview	Recombinant Human GPC1 protein(P35052)(342-530aa), fused to N-terminal His-GST tag and C-terminal Myc tag, was expressed in E. coli.
Species	Human
Source	E.coli
ProteinLength	342-530aa
Form	If the delivery form is liquid, the default storage buffer is Tris/PBS-based buffer, 5%-50% glycerol. If the delivery form is lyophilized powder, the buffer before lyophilization is Tris/PBS-based buffer, 6% Trehalose, pH 8.0.
Molecular Mass	55.7 kDa
Purity	Greater than 85% as determined by SDS-PAGE.
Storage	Store at -20°C/-80°C upon receipt, aliquoting is necessary for mutiple use. Avoid repeated freeze-thaw cycles.
Reconstitution	It is recommended that sterile water be added to the vial to prepare a stock solution of 0.2 ug/ul. Centrifuge the vial at 4°C before opening to recover the entire contents.

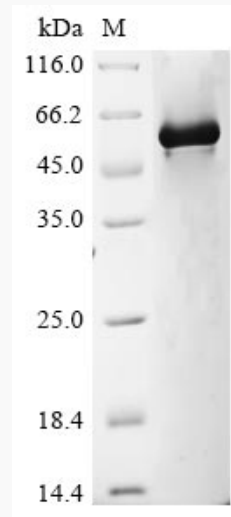
GENE INFORMATION

 Tel: 1-631-559-9269 1-516-512-3133

 Email: info@creative-biomart.com  Fax: 1-631-938-8127

 45-1 Ramsey Road, Shirley, NY 11967, USA

Gene Name	GPC1 glypican 1 [Homo sapiens]
Official Symbol	GPC1
Synonyms	GPC1; glypican 1; glypican-1; glypican; glypican proteoglycan 1; FLJ38078;
Gene ID	2817
mRNA Refseq	NM_002081
Protein Refseq	NP_002072
MIM	600395
UniProt ID	P35052

SDS-PAGE


Tel: 1-631-559-9269 1-516-512-3133

Email: info@creative-biomart.com Fax: 1-631-938-8127

45-1 Ramsey Road, Shirley, NY 11967, USA