

## Recombinant Human GPC1 protein, His-tagged

Cat. No. GPC1-152H Lot. No. (See product label)

### SPECIFICATION

<b>Product Overview</b>	Recombinant Human GPC1 protein(P35052-1)(Asp24-Ser530), fused with C-terminal His tag, was expressed in HEK293.
<b>Species</b>	Human
<b>Source</b>	HEK293
<b>ProteinLength</b>	Asp24-Ser530
<b>Tag</b>	C-His
<b>Form</b>	Lyophilized from 0.22µm filtered solution in PBS (pH 7.4). Normally 5% trehalose is added as protectant before lyophilization.
<b>Bio-activity</b>	Immobilized Human Glypican 1, His Tag at 0.5µg/ml (100µl/well) on the plate. Dose response curve for Anti-Glypican 1 Antibody, hFc Tag with the EC50 of 21.9ng/ml determined by ELISA.
<b>Molecular Mass</b>	The protein has a predicted MW of 57.1 kDa. Due to glycosylation, the protein migrates to 70-135 kDa based on Tris-Bis PAGE result.
<b>Endotoxin</b>	Less than 1EU per µg by the LAL method.
<b>Purity</b>	> 95% as determined by Tris-Bis PAGE; > 95% as determined by HPLC

 Tel: 1-631-559-9269 1-516-512-3133

 Email: [info@creative-biomart.com](mailto:info@creative-biomart.com)  Fax: 1-631-938-8127

 45-1 Ramsey Road, Shirley, NY 11967, USA

**Storage** Reconstituted protein stable at -80°C for 12 months, 4°C for 1 week. Use a manual defrost freezer and avoid repeated freeze-thaw cycles.

**Reconstitution** Centrifuge tubes before opening. Reconstituting to a concentration more than 100 µg/ml is recommended. Dissolve the lyophilized protein in distilled water.

## GENE INFORMATION

**Gene Name** GPC1 glypican 1 [ Homo sapiens ]

**Official Symbol** GPC1

**Synonyms** GPC1; glypican 1; glypican-1; glypican; glypican proteoglycan 1; FLJ38078;

**Gene ID** 2817

**mRNA Refseq** NM\_002081

**Protein Refseq** NP\_002072

**MIM** 600395

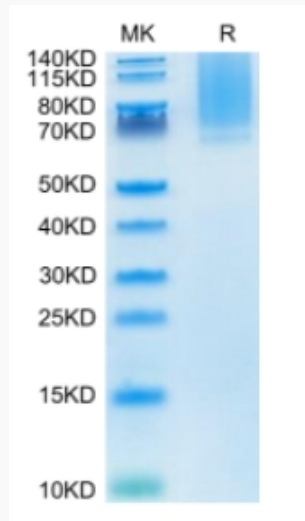
**UniProt ID** P35052

 Tel: 1-631-559-9269 1-516-512-3133

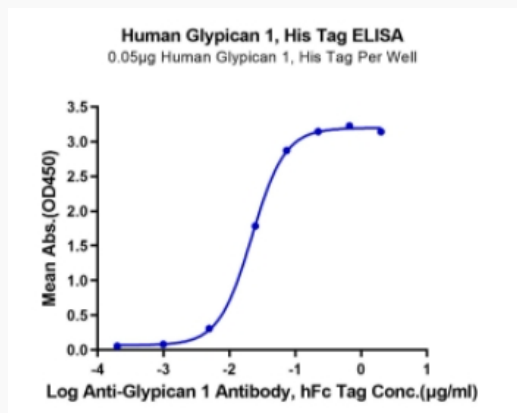
 Email: [info@creative-biomart.com](mailto:info@creative-biomart.com)  Fax: 1-631-938-8127

 45-1 Ramsey Road, Shirley, NY 11967, USA

**Tris-Bis PAGE**



**ELISA Data**



 Tel: 1-631-559-9269 1-516-512-3133

 Email: [info@creative-biomart.com](mailto:info@creative-biomart.com)  Fax: 1-631-938-8127

 45-1 Ramsey Road, Shirley, NY 11967, USA