

Recombinant Human GPC1 Protein (Asp24-Ser529), C-His tagged

Cat. No. GPC1-3057H Lot. No. (See product label)

SPECIFICATION

Product Overview	Recombinant human Gpc1 (Asp24-Ser529) protein fused with the C-terminal His tag was expressed in Mammalian cells.
Species	Human
Source	Mammalian Cells
ProteinLength	Asp24-Ser529
Molecular Mass	55.66 kDa
Purity	>90 % as determined by SDS-PAGE.
Notes	For research use only.
Storage	Use a manual defrost freezer and avoid repeated freeze thaw cycles. Store at 2 to 8 centigrade for one week. Store at -20 to -80 centigrade for twelve months from the date of receipt.
Storage Buffer	Supplied as solution form in PBS or lyophilized from PBS.
Reconstitution	Reconstitute in sterile water for a stock solution.
Shipping	In general, proteins are provided as lyophilized powder/frozen liquid. They are

 Tel: 1-631-559-9269 1-516-512-3133

 Email: info@creative-biomart.com  Fax: 1-631-938-8127

 45-1 Ramsey Road, Shirley, NY 11967, USA

shipped out with dry ice/blue ice unless customers require otherwise.

GENE INFORMATION

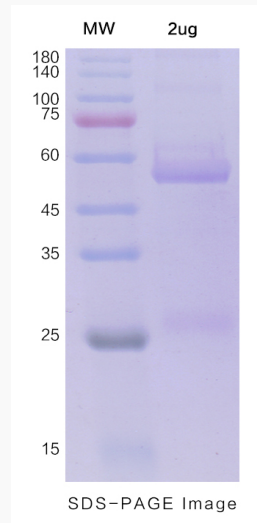
Gene Name	GPC1 glypican 1 [Homo sapiens (human)]
Official Symbol	GPC1
Synonyms	GPC1; glypican 1; glypican-1; glypican; glypican proteoglycan 1; FLJ38078;
Gene ID	2817
mRNA Refseq	NM_002081
Protein Refseq	NP_002072
MIM	600395
UniProt ID	P35052

 Tel: 1-631-559-9269 1-516-512-3133

 Email: info@creative-biomart.com  Fax: 1-631-938-8127

 45-1 Ramsey Road, Shirley, NY 11967, USA

SDS-PAGE



 Tel: 1-631-559-9269 1-516-512-3133

 Email: info@creative-biomart.com  Fax: 1-631-938-8127

 45-1 Ramsey Road, Shirley, NY 11967, USA