

Recombinant Human GPC1 Protein, GST-tagged

Cat. No. GPC1-5145H Lot. No. (See product label)

SPECIFICATION

Product Overview	Human GPC1 partial ORF (NP_002072, 24 a.a. - 131 a.a.) recombinant protein with GST-tag at N-terminal.
Species	Human
Source	Wheat Germ
Description	Cell surface heparan sulfate proteoglycans are composed of a membrane-associated protein core substituted with a variable number of heparan sulfate chains. Members of the glypican-related integral membrane proteoglycan family (GRIPS) contain a core protein anchored to the cytoplasmic membrane via a glycosyl phosphatidylinositol linkage. These proteins may play a role in the control of cell division and growth regulation. [provided by RefSeq
Molecular Mass	37.62 kDa
AA Sequence	DPASKSRSCGEVRQIYGAKGFLSDVPQAEISGEHLRICPQGYTCCTSEMEENLAN RSHAELETALRDSSRVLQAMLATQLRSFDDHFQHLLNDSERTLQATFPGAFG
Applications	Enzyme-linked Immunoabsorbent Assay Western Blot (Recombinant protein) Antibody Production Protein Array
Notes	Best use within three months from the date of receipt of this protein.

 Tel: 1-631-559-9269 1-516-512-3133

 Email: info@creative-biomart.com  Fax: 1-631-938-8127

 45-1 Ramsey Road, Shirley, NY 11967, USA

Storage Store at -80 centigrade. Aliquot to avoid repeated freezing and thawing.

Storage Buffer 50 mM Tris-HCl, 10 mM reduced Glutathione, pH=8.0 in the elution buffer.

GENE INFORMATION

Gene Name GPC1 glypican 1 [Homo sapiens]

Official Symbol GPC1

Synonyms GPC1; glypican 1; glypican-1; glypican; glypican proteoglycan 1; FLJ38078;

Gene ID 2817

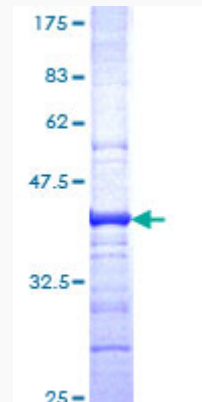
mRNA Refseq NM_002081

Protein Refseq NP_002072

MIM 600395

UniProt ID P35052

Quality Control Testing



 Tel: 1-631-559-9269 1-516-512-3133

 Email: info@creative-biomart.com  Fax: 1-631-938-8127

 45-1 Ramsey Road, Shirley, NY 11967, USA



12.5% SDS-PAGE Stained with Coomassie Blue.

 Tel: 1-631-559-9269 1-516-512-3133

 Email: info@creative-biomart.com  Fax: 1-631-938-8127

 45-1 Ramsey Road, Shirley, NY 11967, USA