

Recombinant Human GPC2 protein, Fc-tagged

Cat. No. GPC2-32H **Lot. No.** (See product label)

SPECIFICATION

Product Overview	Recombinant Human GPC2 protein (Ser24-Gly554), fused to Fc-tag at C-terminus, was expressed in HEK293T.
Species	Human
Source	HEK293
ProteinLength	531
Description	Cerebroglycan is a glycoposphatidylinositol-linked integral membrane heparan sulfate proteoglycan found in the developing nervous system. Cerebroglycan participates in cell adhesion and is thought to regulate the growth and guidance of axons. Cerebroglycan has especially high affinity for laminin-1.
Form	Lyophilized from 695 µL bulk protein in a 0.2 µm filtered solution of 50 mM Tris, 100 mM Glycine, 25 mM Arginine, 150 mM NaCl, pH7.5 with 10% trehalose as protectant.
Molecular Mass	84.5 kDa
Endotoxin	Less than 1.0 EU per µg by the LAL method.
Purity	>90% as determined by SDS-PAGE.
Storage	The product is shipped at ambient temperature. Upon receipt, store it immediately at -20 centigrade or lower for long term storage.No activity loss was observed after

 Tel: 1-631-559-9269 1-516-512-3133

 Email: info@creative-biomart.com  Fax: 1-631-938-8127

 45-1 Ramsey Road, Shirley, NY 11967, USA

storage at: -20 to -70 centigrade for 12 months in lyophilized state from date of receipt; -70 centigrade for 3 months under sterile conditions after reconstitution.

Reconstitution

It is strongly recommended to reconstitute the lyophilized Human Glypican 2, Fc Tag with 1000 µL sterile deionized water to a stock solution of 50 µg/ml. Solubilize for 30 to 60 minutes at room temperature with occasional gentle mixing. Avoid vigorous shaking or vortexing.

GENE INFORMATION

Gene Name GPC2

Official Symbol GPC2

Gene ID 221914

mRNA Refseq NM_152742.3

Protein Refseq NP_689955.1

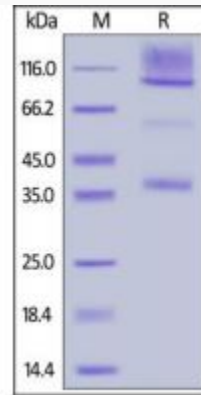
MIM 618446

UniProt ID Q8N158

 Tel: 1-631-559-9269 1-516-512-3133

 Email: info@creative-biomart.com  Fax: 1-631-938-8127

 45-1 Ramsey Road, Shirley, NY 11967, USA

SDS-PAGE of GPC2-32H

Human Glypican 2, Fc Tag on SDS-PAGE under reducing (R) condition. The gel was stained overnight with Coomassie Blue. The purity of the protein is greater than 90%.

 Tel: 1-631-559-9269 1-516-512-3133

 Email: info@creative-biomart.com  Fax: 1-631-938-8127

 45-1 Ramsey Road, Shirley, NY 11967, USA