

Recombinant Human GPC2 protein, His-tagged

Cat. No. GPC2-3829H Lot. No. (See product label)

SPECIFICATION

Product Overview	Recombinant Human GPC2 protein(Val338~Thr562), fused with N-terminal His tag, was expressed in HEK293.
Species	Human
Source	HEK293
ProteinLength	Val338~Thr562
Tag	N-His
Form	PBS, pH7.4, containing 5% Trehalose.
Bio-activity	<p>Glypican 2 (GPC2), a member of glypican (GPC) family genes, produces proteoglycan with a glycosylphosphatidylinositol anchor. Level of the various glypicans changes in a stage and tissue specific manner. Syndecan-2 is expressed in cells of mesenchymal origin, neuronal and epithelial cells, and is the predominant syndecan expressed during embryonic development. Human Syndecan-2 is synthesized as a 201 amino acid (aa) core protein with an 18 aa signal sequence, a 126 aa extracellular domain (ECD), a 25 aa transmembrane region and a 32 aa cytoplasmic tail. The human ECD of Syndecan-2 contains three closely-spaced consensus Ser-Gly sequences for the attachment of HS side chains. It shares 76%, 73%, 87%, 78% and 63% aa identity with the ECD of mouse, rat, bovine, canine and chicken Syndecan-2, respectively. SDC1 has been identified as an interactor of GPC2, thus a functional binding ELISA assay was conducted to detect the interaction</p>

 Tel: 1-631-559-9269 1-516-512-3133

 Email: info@creative-biomart.com  Fax: 1-631-938-8127

 45-1 Ramsey Road, Shirley, NY 11967, USA

of recombinant human GPC2 and recombinant bovine SDC1. Briefly, biotin-linked GPC2 were diluted serially in PBS, with 0.01% BSA (pH 7.4). Duplicate samples of 100 µl were then transferred to SDC1-coated microtiter wells and incubated for 1h at 37°C. Wells were washed with PBST 3 times and incubation with Streptavidin-HRP for 30min, then wells were aspirated and washed 5 times. With the addition of substrate solution, wells were incubated 15-25 minutes at 37°C. Finally, add 50 µl stop solution to the wells and read at 450 nm immediately. The EC50 is 195.6 ng/mL.

Molecular Mass	25.6kDa
Endotoxin	<1.0EU per 1µg (determined by the LAL method)
Purity	> 95%
Storage	Avoid repeated freeze/thaw cycles. Store at 2-8°C for one month. Aliquot and store at -80°C for 12 months.
Reconstitution	Reconstitute in 10mM PBS (pH7.4) to a concentration of 0.1-1.0 mg/mL. Do not vortex.

GENE INFORMATION

Gene Name	GPC2 glypican 2 (cerebroglycan) [Homo sapiens]
Official Symbol	GPC2
Synonyms	GPC2; glypican 2 (cerebroglycan); cerebroglycan; DKFZp547M109; FLJ38962; glypican proteoglycan 2; cerebroglycan proteoglycan;
Gene ID	2818

 Tel: 1-631-559-9269 1-516-512-3133

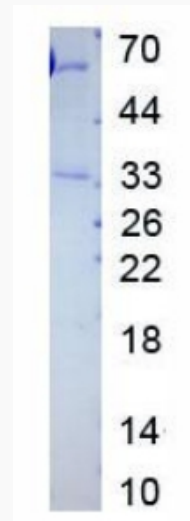
 Email: info@creative-biomart.com  Fax: 1-631-938-8127

 45-1 Ramsey Road, Shirley, NY 11967, USA

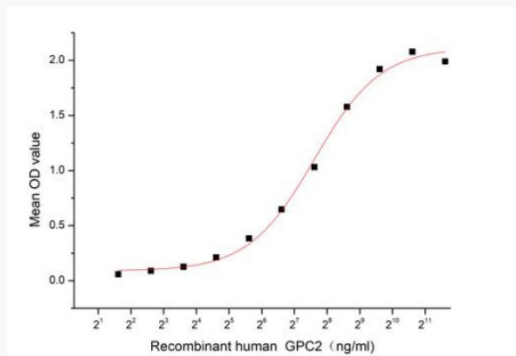
UniProt ID

Q8N158

SDS-PAGE



Activity



 Tel: 1-631-559-9269 1-516-512-3133

 Email: info@creative-biomart.com  Fax: 1-631-938-8127

 45-1 Ramsey Road, Shirley, NY 11967, USA