

Recombinant Cynomolgus GPC3 protein, His-tagged

Cat. No. GPC3-1117C Lot. No. (See product label)

SPECIFICATION

Product Overview	Recombinant Cynomolgus GPC3 protein(XP_005594665.1)(Gln25-His559), fused with C-terminal His tag, was expressed in HEK293.
Species	Cynomolgus
Source	HEK293
ProteinLength	Gln25-His559
Tag	C-His
Form	Lyophilized from 0.22µm filtered solution in PBS (pH 7.4). Normally 5% trehalose is added as protectant before lyophilization.
Bio-activity	Immobilized Cynomolgus GPC3, His Tag at 1µg/ml (100µl/well) on the plate. Dose response curve for Anti-GPC3 Antibody, hFc Tag with the EC50 of 12.1ng/ml determined by ELISA.
Molecular Mass	The protein has a predicted MW of 61.8 kDa. Due to glycosylation, the protein migrates to 42 kDa, 70-135 kDa based on Tris-Bis PAGE result.
Endotoxin	Less than 1EU per µg by the LAL method.
Purity	> 95% as determined by Tris-Bis PAGE; > 95% as determined by HPLC

 Tel: 1-631-559-9269 1-516-512-3133

 Email: info@creative-biomart.com  Fax: 1-631-938-8127

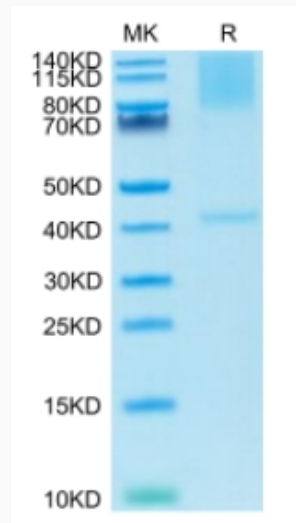
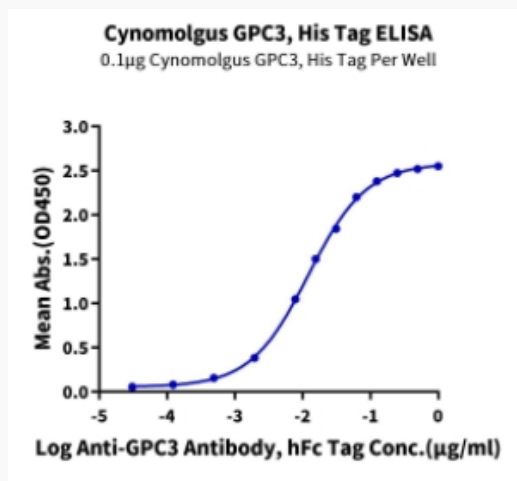
 45-1 Ramsey Road, Shirley, NY 11967, USA

Storage

Reconstituted protein stable at -80°C for 12 months, 4°C for 1 week. Use a manual defrost freezer and avoid repeated freeze-thaw cycles.

Reconstitution

Centrifuge tubes before opening. Reconstituting to a concentration more than 100 µg/ml is recommended. Dissolve the lyophilized protein in distilled water.

Tris-Bis PAGE

ELISA Data


Tel: 1-631-559-9269 1-516-512-3133

Email: info@creative-biomart.com Fax: 1-631-938-8127

45-1 Ramsey Road, Shirley, NY 11967, USA