

Recombinant Human GPC3 protein, His-tagged

Cat. No. GPC3-1259H Lot. No. (See product label)

SPECIFICATION

Product Overview	Recombinant Human GPC3 protein(Thr343~His559), fused with N-terminal His Tag, was expressed in E.coli.
Species	Human
Source	E.coli
ProteinLength	Thr343~His559
Form	20mM Tris, 150mM NaCl, pH8.0, containing 1mM EDTA, 1mM DTT, 0.01% SKL, 5% Trehalose and Proclin300.
Molecular Mass	55kDa
Endotoxin	<1.0EU per 1g (determined by the LAL method)
Purity	> 95%
Storage	Avoid repeated freeze/thaw cycles. Store at 2-8°C for one month. Aliquot and store at -80°C for 12 months.
Reconstitution	Reconstitute in 20mM Tris, 150mM NaCl (pH8.0) to a concentration of 0.1-1.0 mg/mL. Do not vortex.

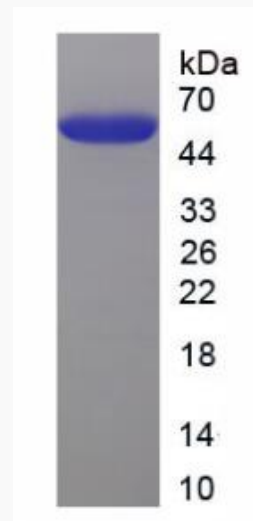
GENE INFORMATION

 Tel: 1-631-559-9269 1-516-512-3133

 Email: info@creative-biomart.com  Fax: 1-631-938-8127

 45-1 Ramsey Road, Shirley, NY 11967, USA

Gene Name	GPC3 glypican 3 [Homo sapiens]
Official Symbol	GPC3
Synonyms	GPC3; glypican 3; SDYS; glypican-3; DGSX; glypican proteoglycan 3; OCI 5; SGB; SGBS; SGBS1; secreted glypican-3; intestinal protein OCI-5; heparan sulphate proteoglycan; MXR7; OCI-5; GTR2-2;
Gene ID	2719
mRNA Refseq	NM_001164617
Protein Refseq	NP_001158089
MIM	300037
UniProt ID	P51654

SDS-PAGE


 Tel: 1-631-559-9269 1-516-512-3133

 Email: info@creative-biomart.com  Fax: 1-631-938-8127

 45-1 Ramsey Road, Shirley, NY 11967, USA