

## Recombinant Human GPC3 protein, VLP

Cat. No. GPC3-1423H Lot. No. (See product label)

### SPECIFICATION

<b>Product Overview</b>	Recombinant Human GPC3 protein(P51654-1)(Gly510-Asn554) was expressed in E.coli.
<b>Species</b>	Human
<b>ProteinLength</b>	Gly510-Asn554
<b>Tag</b>	N/A
<b>Form</b>	Supplied as 0.22µm filtered solution in 20mM HEPES, 500mM NaCl, 10% glycerol, 0.1% Tween20 (pH 7.7).
<b>Bio-activity</b>	Immobilized Human GPC3 VLP at 5µg/ml (100µl/Well) on the plate. Dose response curve for Anti-GPC3 Antibody, hFc Tag with the EC50 of 3.3ng/ml determined by ELISA.
<b>Molecular Mass</b>	The protein has a predicted MW of 14 kDa.
<b>Endotoxin</b>	Less than 1EU per µg by the LAL method.
<b>Purity</b>	
<b>Storage</b>	Valid for 12 months from date of receipt when stored at -80°C.;Recommend to aliquot the protein into smaller quantities for optimal storage. Please do not repeated freeze-thaw cycles.

 Tel: 1-631-559-9269 1-516-512-3133

 Email: [info@creative-biomart.com](mailto:info@creative-biomart.com)  Fax: 1-631-938-8127

 45-1 Ramsey Road, Shirley, NY 11967, USA

**Reconstitution** It is recommended that sterile water be added to the vial to prepare a stock solution of 0.2 ug/ul. Centrifuge the vial at 4°C before opening to recover the entire contents.

## GENE INFORMATION

**Gene Name** GPC3 glypican 3 [ Homo sapiens ]

**Official Symbol** GPC3

**Synonyms** GPC3; glypican 3; SDYS; glypican-3; DGSX; glypican proteoglycan 3; OCI 5; SGB; SGBS; SGBS1; secreted glypican-3; intestinal protein OCI-5; heparan sulphate proteoglycan; MXR7; OCI-5; GTR2-2;

**Gene ID** 2719

**mRNA Refseq** NM\_001164617

**Protein Refseq** NP\_001158089

**MIM** 300037

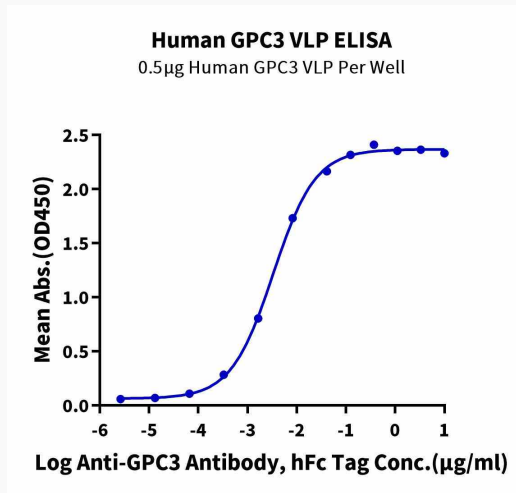
**UniProt ID** P51654

 Tel: 1-631-559-9269 1-516-512-3133

 Email: [info@creative-biomart.com](mailto:info@creative-biomart.com)  Fax: 1-631-938-8127

 45-1 Ramsey Road, Shirley, NY 11967, USA

ELISA



 Tel: 1-631-559-9269 1-516-512-3133

 Email: [info@creative-biomart.com](mailto:info@creative-biomart.com)  Fax: 1-631-938-8127

 45-1 Ramsey Road, Shirley, NY 11967, USA