

Recombinant Human GPC3 protein, His-Avi-tagged, Biotinylated

Cat. No. GPC3-2247H **Lot. No.** (See product label)

SPECIFICATION

Product Overview	Biotinylated Recombinant Human GPC3 protein(P51654-1)(Gln25-His559), fused with C-terminal His and Avi tag, was expressed in HEK293.
Species	Human
Source	HEK293
ProteinLength	Gln25-His559
Tag	C-His-Avi
Conjugation/Label	Biotin
Form	Lyophilized from 0.22µm filtered solution in PBS (pH 7.4). Normally 5% trehalose is added as protectant before lyophilization.
Bio-activity	Immobilized Anti-GPC3 Antibody, hFc Tag at 1µg/ml (100µl/well) on the plate. Dose response curve for Biotinylated Human GPC3, His Tag with the EC50 of 11.5ng/ml determined by ELISA.
Molecular Mass	The protein has a predicted MW of 63.6 kDa. Due to glycosylation, the protein migrates to 42 kDa, 68-80 kDa based on Tris-Bis PAGE result.
Endotoxin	Less than 1EU per µg by the LAL method.

 Tel: 1-631-559-9269 1-516-512-3133

 Email: info@creative-biomart.com  Fax: 1-631-938-8127

 45-1 Ramsey Road, Shirley, NY 11967, USA

Purity	> 95% as determined by Tris-Bis PAGE; > 95% as determined by HPLC
Storage	Reconstituted protein stable at -80°C for 12 months, 4°C for 1 week. Use a manual defrost freezer and avoid repeated freeze-thaw cycles.
Reconstitution	Centrifuge tubes before opening. Reconstituting to a concentration more than 100 µg/ml is recommended. Dissolve the lyophilized protein in distilled water.
Conjugation	Biotin

GENE INFORMATION

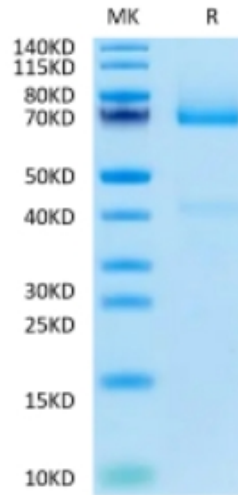
Gene Name	GPC3 glypican 3 [Homo sapiens]
Official Symbol	GPC3
Synonyms	GPC3; glypican 3; SDYS; glypican-3; DGSX; glypican proteoglycan 3; OCI 5; SGB; SGBS; SGBS1; secreted glypican-3; intestinal protein OCI-5; heparan sulphate proteoglycan; MXR7; OCI-5; GTR2-2;
Gene ID	2719
mRNA Refseq	NM_001164617
Protein Refseq	NP_001158089
MIM	300037
UniProt ID	P51654

 Tel: 1-631-559-9269 1-516-512-3133

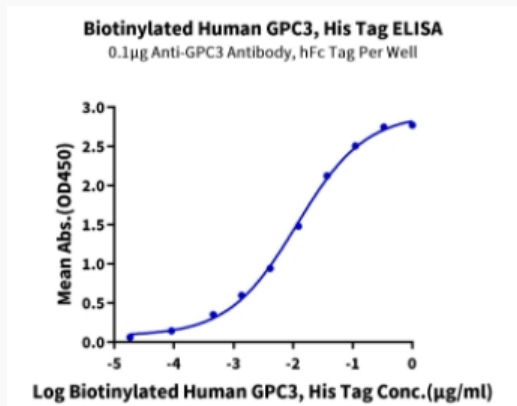
 Email: info@creative-biomart.com  Fax: 1-631-938-8127

 45-1 Ramsey Road, Shirley, NY 11967, USA

Tris-Bis PAGE



ELISA Data



 Tel: 1-631-559-9269 1-516-512-3133

 Email: info@creative-biomart.com  Fax: 1-631-938-8127

 45-1 Ramsey Road, Shirley, NY 11967, USA