

## Recombinant Human GPC3 Protein (25-559aa), C-His-tagged

Cat. No. GPC3-22H Lot. No. (See product label)

### SPECIFICATION

**Product Overview** Recombinant human GPC3 (25-559aa), fused to His-tag at C-terminus, was expressed in insect cell and purified by using conventional chromatography techniques.

**Species** Human

**Source** Insect Cells

**ProteinLength** 25-559

**Description** Cell surface heparan sulfate proteoglycans are composed of a membrane-associated protein core substituted with a variable number of heparan sulfate chains. Members of the glypican-related integral membrane proteoglycan family (GRIPS) contain a core protein anchored to the cytoplasmic membrane via a glycosyl phosphatidylinositol linkage. These proteins may play a role in the control of cell division and growth regulation. The protein encoded by this gene can bind to and inhibit the dipeptidyl peptidase activity of CD26, and it can induce apoptosis in certain cell types. Deletion mutations in this gene are associated with Simpson-Golabi-Behmel syndrome, also known as Simpson dysmorphia syndrome. Alternative splicing results in multiple transcript variants.

**Form** Liquid

**Molecular Mass** 61.8 kDa (544aa)

 Tel: 1-631-559-9269 1-516-512-3133

 Email: [info@creative-biomart.com](mailto:info@creative-biomart.com)  Fax: 1-631-938-8127

 45-1 Ramsey Road, Shirley, NY 11967, USA

**AA Sequence**

ADPQPPPPPPDATCHQVRSFFQRLQPGLKWWPETPVPGSDLQVCLPKGPTCCSRK  
 MEEKYQLTARLNMEQLLQSASMEKFLIIQNAAVFQEAFEIVVRHAKNYTNAMFKNN  
 YPSLTPQAFEFVGEFFTDVSLYLGSINVDMMVNEFDSLFPVIYTQLMNPGLPDSA  
 LDINECLRGARRDLKVFGNFPKLIMTQVSKSLQVTRIFLQALNLGIEVINTTDHLKFSK  
 DCGRMLTRMWYCSYCQGLMMVKPCGGYCNVVMQGC MAGVVEIDKYWREYILSLE  
 ELVNGMYRIYDMENVLLGLFSTIHDSIQYVQKNAGKLT TTIGKLC AHSQQRQYRSAY  
 YPEDLFIDKKVLKVAHVEHEETLSSRRRELIQKLKSFISFYSALPGYICSHSPVAENDT  
 LCWNGQELVERYSQKAARNGMKNQFNHLMKMGPEPVVSIIDKCLKHINQLLRTM  
 SMPKGRVLDKNLDEEGFESGDCGDEDECIGGSGDGMKVKVKNQLRFLAELAYDLDV  
 DDAPGNSQQATPKDNEISTFHNLGNVHHHHHHH

**Endotoxin** < 1 EU/μg of protein (determined by LAL method)

**Purity** > 90% by SDS-PAGE

**Applications** SDS-PAGE

**Storage** Can be stored at +2 to +8 centigrade for 1 week. For long term storage, aliquot and store at -20 to -80 centigrade. Avoid repeated freezing and thawing cycles.

**Concentration** 0.5 mg/mL (determined by absorbance at 280nm)

**Storage Buffer** Phosphate-Buffered Saline (pH 7.4) containing 10% glycerol

## GENE INFORMATION

**Gene Name** GPC3 glypican 3 [ Homo sapiens (human) ]

**Official Symbol** GPC3

**Synonyms** GPC3; glypican 3; glypican-3; glypican proteoglycan 3; heparan sulphate

 Tel: 1-631-559-9269 1-516-512-3133

 Email: [info@creative-biomart.com](mailto:info@creative-biomart.com)  Fax: 1-631-938-8127

 45-1 Ramsey Road, Shirley, NY 11967, USA

proteoglycan; intestinal protein OCI-5; secreted glypican-3; SGB; DGSX; MXR7; SDYS; SGBS; OCI-5; SGBS1; GTR2-2

**Gene ID** 2719

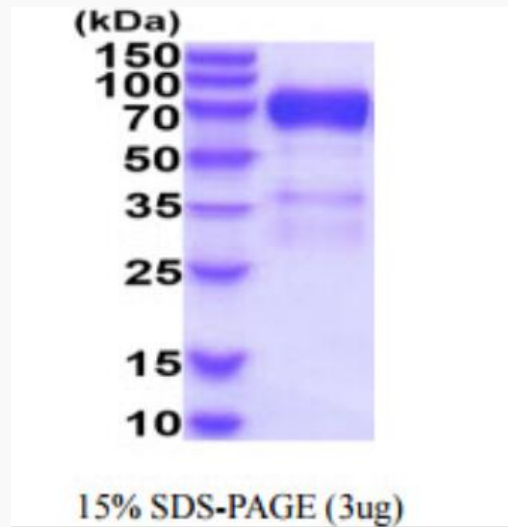
**mRNA Refseq** NM\_004484

**Protein Refseq** NP\_004475

**MIM** 300037

**UniProt ID** P51654

**SDS-PAGE**



3 µg by SDS-PAGE under reducing condition and visualized by coomassie blue stain.

 Tel: 1-631-559-9269 1-516-512-3133

 Email: [info@creative-biomart.com](mailto:info@creative-biomart.com)  Fax: 1-631-938-8127

 45-1 Ramsey Road, Shirley, NY 11967, USA