

Active Recombinant Human GPC3 protein, His-tagged

Cat. No. GPC3-2551H Lot. No. (See product label)

SPECIFICATION

| | |
|-------------------------|---|
| Product Overview | Active Recombinant Human GPC3 protein(P51654-1)(Gln25-His559) is expressed from HEK293 with His tag at the C-Terminus. |
| Species | Human |
| Source | HEK293 |
| ProteinLength | 25-559 aa |
| Form | Lyophilized from 0.22µm filtered solution in PBS (pH 7.4). |
| Bio-activity | Immobilized Human GPC3, His Tag at 1 µg/ml (100µl/Well). Dose response curve for Anti-GPC3 Antibody, hFc Tag with the EC50 of 4.3ng/ml determined by ELISA. |
| Molecular Mass | The protein has a predicted MW of 61.6 kDa. Due to furin-like convertase cleavage site and glycosylation, the protein migrates to 42 kDa, 70-115 kDa based on Bis-Tris PAGE result. |
| Endotoxin | Less than 1 EU per µg by the LAL method. |
| Purity | > 95% as determined by Bis-Tris PAGE > 95% as determined by HPLC |
| Storage | -20 to -80°C for 12 months as supplied from date of receipt. -80°C for 3 months after reconstitution. Recommend to aliquot the protein into smaller quantities for optimal storage. Please minimize freeze-thaw cycles. |

 Tel: 1-631-559-9269 1-516-512-3133

 Email: info@creative-biomart.com  Fax: 1-631-938-8127

 45-1 Ramsey Road, Shirley, NY 11967, USA



Reconstitution Dissolve the lyophilized protein in distilled water.

GENE INFORMATION

Gene Name GPC3 glypican 3 [Homo sapiens]

Official Symbol GPC3

Synonyms GPC3; glypican 3; SDYS; glypican-3; DGSX; glypican proteoglycan 3; OCI 5; SGB; SGBS; SGBS1; secreted glypican-3; intestinal protein OCI-5; heparan sulphate proteoglycan; MXR7; OCI-5; GTR2-2;

Gene ID 2719

mRNA Refseq NM_001164617

Protein Refseq NP_001158089

MIM 300037

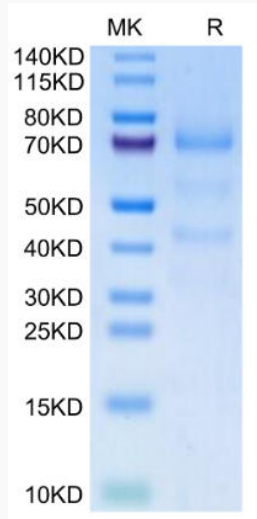
UniProt ID P51654

 Tel: 1-631-559-9269 1-516-512-3133

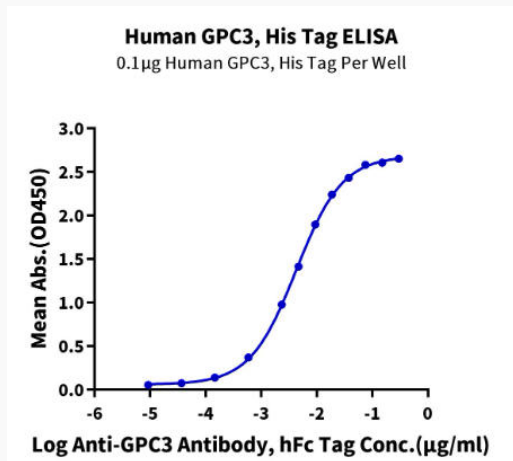
 Email: info@creative-biomart.com  Fax: 1-631-938-8127

 45-1 Ramsey Road, Shirley, NY 11967, USA

Bis-Tris PAGE



ELISA Data



 Tel: 1-631-559-9269 1-516-512-3133

 Email: info@creative-biomart.com  Fax: 1-631-938-8127

 45-1 Ramsey Road, Shirley, NY 11967, USA