

Recombinant Rat Gpc3 protein, His-tagged

Cat. No. GPC3-2633R Lot. No. (See product label)

SPECIFICATION

Product Overview	Recombinant Rat Gpc3(Ile344~Ser559) fused with His tag at N-terminal was expressed in E. coli.
Species	Rat
Source	E.coli
ProteinLength	Ile344~Ser559
Description	Gpc3 played an important role in many functions.
Form	20mM Tris, 150mM NaCl, pH8.0, containing 1mM EDTA, 1mM DTT, 0.01% sarcosyl, 5%Trehalose and Proclin300.
Molecular Mass	Predicted Molecular Mass: 28.1kDa; Accurate Molecular Mass: 33kDa as determined by SDS-PAGE reducing conditions.
Purity	>95%
Applications	Positive Control; Immunogen; SDS-PAGE; WB. (May be suitable for use in other assays to be determined by the end user.)
Stability	The thermal stability is described by the loss rate. The loss rate was determined by accelerated thermal degradation test, that is, incubate the protein at 37 centigrade for 48h, and no obvious degradation and precipitation were observed. The loss rate is

 Tel: 1-631-559-9269 1-516-512-3133

 Email: info@creative-biomart.com  Fax: 1-631-938-8127

 45-1 Ramsey Road, Shirley, NY 11967, USA

less than 5% within the expiration date under appropriate storage condition.

Storage

Avoid repeated freeze/thaw cycles.
 Store at 2-8 centigrade for one month.
 Aliquot and store at -80 centigrade for 12 months.

Concentration

200µg/mL

Reconstitution

Reconstitute in 20mM Tris, 150mM NaCl (pH8.0) to a concentration of 0.1-1.0 mg/mL.
 Do not vortex.

GENE INFORMATION

Gene Name

[Gpc3 glypican 3 \[Rattus norvegicus \]](#)

Official Symbol

[Gpc3](#)

Synonyms

GPC3; glypican 3; glypican-3; proteoglycan GPC3; intestinal protein OCI-5; defective in Simpson-Golabi-Behmel overgrowth syndrome; OCI-5; MGC93606;

Gene ID

[25236](#)

mRNA Refseq

[NM_012774](#)

Protein Refseq

[NP_036906](#)

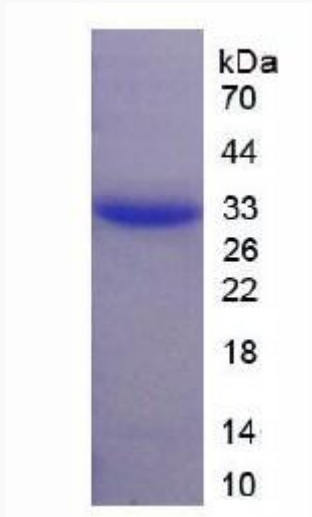
UniProt ID

[P13265](#)

 Tel: 1-631-559-9269 1-516-512-3133

 Email: info@creative-biomart.com  Fax: 1-631-938-8127

 45-1 Ramsey Road, Shirley, NY 11967, USA



 Tel: 1-631-559-9269 1-516-512-3133

 Email: info@creative-biomart.com  Fax: 1-631-938-8127

 45-1 Ramsey Road, Shirley, NY 11967, USA