

## Active Recombinant Human GPC3 Protein (Gln 25 - His 559), Fc-tagged, FITC-Labeled

Cat. No. GPC3-338H Lot. No. (See product label)

### SPECIFICATION

<b>Product Overview</b>	Recombinant Human GPC3 Protein, Fc-tagged, FITC-Labeled is expressed from human HEK293 cells. It contains AA Gln 25 - His 559 (Accession # P51654). It is the FITC labeled form of Human Glypican 3, Fc Tag. Predicted N-terminus: Gln 25. This protein carries a human IgG1 Fc tag at the C-terminus. The protein has a calculated MW of 87.4 kDa. The protein migrates as 43 kDa, 58 kDa and 100 kDa under reducing (R) condition (SDS-PAGE) due to glycosylation. Conjugate (FITC): Excitation source: 488 nm spectral line, argon-ion laser; Excitation Wavelength: 488 nm; Emission Wavelength: 535 nm. The FITC to protein molar ratio is 3-5.
<b>Species</b>	Human
<b>Source</b>	HEK293
<b>ProteinLength</b>	Gln 25 - His 559
<b>Form</b>	Lyophilized from 0.22 µm filtered solution in PBS, pH7.4. Normally trehalose is added as protectant before lyophilization.
<b>Bio-activity</b>	Immobilized Anti-Human GPC3 MAb at 10 µg/mL (100 µL/well) can bind Recombinant Human GPC3 Protein, Fc-tagged, FITC-Labeled with a linear range of 0.078-1.25 µg/mL (Ex.488 nm/Em.535 nm) (QC tested).
<b>Molecular Mass</b>	87.4 kDa

 Tel: 1-631-559-9269 1-516-512-3133

 Email: [info@creative-biomart.com](mailto:info@creative-biomart.com)  Fax: 1-631-938-8127

 45-1 Ramsey Road, Shirley, NY 11967, USA

<b>Endotoxin</b>	Less than 1.0 EU per µg by the LAL method.
<b>Purity</b>	>90% as determined by SDS-PAGE.
<b>Notes</b>	Please avoid repeated freeze-thaw cycles.
<b>Stability</b>	No activity loss is observed after storage at: 4-8 centigrade for 12 months in lyophilized state; -70 centigrade for 3 months under sterile conditions after reconstitution.
<b>Storage</b>	For long term storage, the product should be stored at lyophilized state at -20 centigrade or lower.
<b>Reconstitution</b>	It is recommended that sterile water be added to the vial to prepare a stock solution of 0.2 mg/ml. Centrifuge the vial at 4 centigrade before opening to recover the entire contents.
<b>Conjugation</b>	FITC

## GENE INFORMATION

<b>Gene Name</b>	GPC3 glypican 3 [ Homo sapiens ]
<b>Official Symbol</b>	GPC3
<b>Synonyms</b>	GPC3; glypican 3; SDYS; glypican-3; DGSX; OCI 5; SGB; SGBS; SGBS1; MXR7; OCI-5; GTR2-2;
<b>Gene ID</b>	2719
<b>mRNA Refseq</b>	NM_001164617

 Tel: 1-631-559-9269 1-516-512-3133

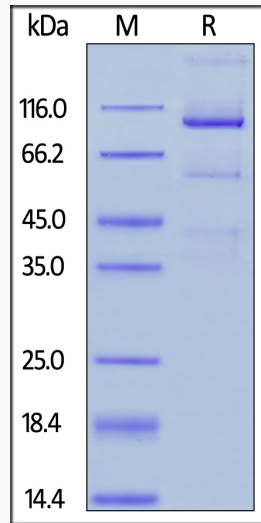
 Email: [info@creative-biomart.com](mailto:info@creative-biomart.com)  Fax: 1-631-938-8127

 45-1 Ramsey Road, Shirley, NY 11967, USA

**Protein Refseq** NP\_001158089

**MIM** 300037

**UniProt ID** P51654



 Tel: 1-631-559-9269 1-516-512-3133

 Email: [info@creative-biomart.com](mailto:info@creative-biomart.com)  Fax: 1-631-938-8127

 45-1 Ramsey Road, Shirley, NY 11967, USA