

Recombinant Cynomolgus GPC3 protein, Fc-tagged

Cat. No. GPC3-50C Lot. No. (See product label)

SPECIFICATION

Product Overview	Recombinant Cynomolgus GPC3 protein (Gln25-His559), fused to human IgG1 Fc tag at C-terminus, was expressed in human 293 cells (HEK293).
Species	Cynomolgus
Source	HEK293
ProteinLength	535
Description	Glypican-3 (GPC3) is also known as Intestinal protein OCI-5, GTR2-2, MXR7, which belongs to the glypican family. Glypican 3/GPC-3 is highly expressed in lung, liver and kidney. Glypican-3 inhibits the dipeptidyl peptidase activity of DPP4. Glypican-3 may be involved in the suppression/modulation of growth in the predominantly mesodermal tissues and organs, and also may play a role in the modulation of IGF2 interactions with its receptor and thereby modulate its function.
Form	Lyophilized from 0.22 um filtered solution in Tris with Glycine, Arginine and NaCl, pH7.5, 10% trehalose.
Molecular Mass	The protein has a calculated MW of 87.5 kDa. The protein migrates as 44 kDa, 60 kDa and 100-120 kDa on a SDS-PAGE gel under reducing (R) condition due to naturally cleavage.
Endotoxin	Less than 1.0 EU per ug by the LAL method.

 Tel: 1-631-559-9269 1-516-512-3133

 Email: info@creative-biomart.com  Fax: 1-631-938-8127

 45-1 Ramsey Road, Shirley, NY 11967, USA

Purity	>90% GPC3 and 2-8% human IgG1 Fc fragment as determined by SDS-PAGE.
Storage	<p>For long term storage, the product should be stored at lyophilized state at -20 centigrade or lower.</p> <p>Please avoid repeated freeze-thaw cycles.</p> <p>This product is stable after storage at:</p> <p>-20 centigrade to -70 centigrade for 12 months in lyophilized state; -70 centigrade for 3 months under sterile conditions after reconstitution.</p>
Reconstitution	It is recommended that sterile water be added to the vial to prepare a stock solution of 0.2 ug/ul. Centrifuge the vial at 4°C before opening to recover the entire contents.

GENE INFORMATION

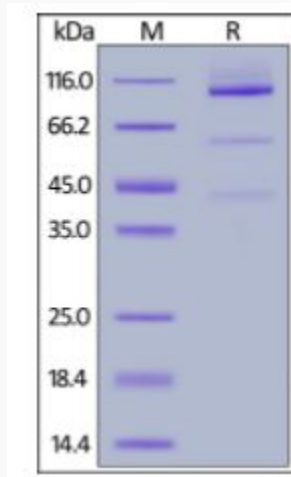
Gene Name	GPC3
Official Symbol	GPC3
Synonyms	GPC3; glypican 3; glypican-3; OCI-5
Gene ID	102137748
mRNA Refseq	XM_005594608.2
Protein Refseq	XP_005594665.1
UniProt ID	A0A2K5VKD5

 Tel: 1-631-559-9269 1-516-512-3133

 Email: info@creative-biomart.com  Fax: 1-631-938-8127

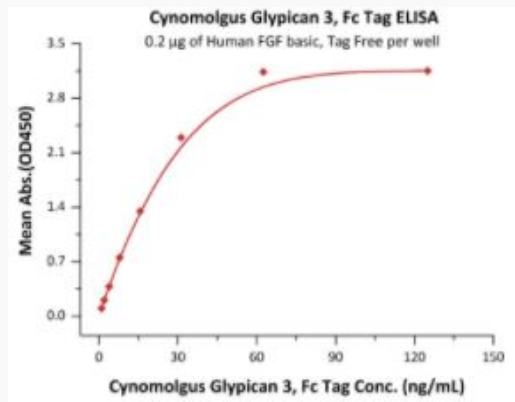
 45-1 Ramsey Road, Shirley, NY 11967, USA

SDS-PAGE of GPC3-50C



Cynomolgus Glypican 3, Fc Tag on SDS-PAGE under reducing (R) condition. The gel was stained overnight with Coomassie Blue. The purity of the protein is greater than 90%.

Bioactivity-ELISA of GPC3-50C



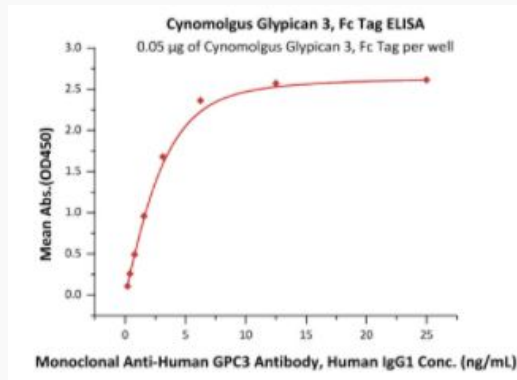
Immobilized Human FGF basic, Tag Free at 2 µg/mL (100 µL/well) can bind Cynomolgus Glypican 3, Fc Tag with a linear range of 1-31 ng/mL (QC tested).

Tel: 1-631-559-9269 1-516-512-3133

Email: info@creative-biomart.com Fax: 1-631-938-8127

45-1 Ramsey Road, Shirley, NY 11967, USA

**Bioactivity-ELISA of
GPC3-50C**



Immobilized Cynomolgus Glypican 3, Fc Tag at 0.5 µg/mL (100 µL/well) can bind Monoclonal Anti-Human GPC3 Antibody, Human IgG1 with a linear range of 0.2-3 ng/mL (Routinely tested).

 Tel: 1-631-559-9269 1-516-512-3133

 Email: info@creative-biomart.com  Fax: 1-631-938-8127

 45-1 Ramsey Road, Shirley, NY 11967, USA