

## Recombinant Human GPC3 Protein, Fc-tagged

**Cat. No.** GPC3-621H    **Lot. No.** (See product label)

### SPECIFICATION

<b>Product Overview</b>	Human Glypican 3, Fc Tag, low endotoxin is expressed from human 293 cells (HEK293). It contains AA Gln 25 - His 559 (Accession # P51654-1).
<b>Species</b>	Human
<b>Source</b>	HEK293
<b>ProteinLength</b>	Gln 25 - His 559
<b>Description</b>	Glypican-3 (GPC3) is also known as Intestinal protein OCI-5, GTR2-2, MXR7, which belongs to the glypican family. Glypican 3 / GPC-3 is highly expressed in lung, liver and kidney. Glypican-3 inhibits the dipeptidyl peptidase activity of DPP4. Glypican-3 may be involved in the suppression/modulation of growth in the predominantly mesodermal tissues and organs, and also may play a role in the modulation of IGF2 interactions with its receptor and thereby modulate its function.
<b>Predicted N Terminal</b>	Gln 25 & Ser 359
<b>Form</b>	Lyophilized from 0.22 µm filtered solution in Tris with Glycine, Arginine and NaCl, pH7.5. Normally trehalose is added as protectant before lyophilization.
<b>Molecular Mass</b>	This protein carries a human IgG1 Fc tag at the C-terminus. This protein contains a furin-like convertase cleavage site, 355-RQYR-358, and will be partially processed into N and C-terminal fragment with calculated MW of 38.1 kDa and 49.3 kDa respectively. The protein migrates as 40 kDa, 60 kDa and 100-120 kDa under

 Tel: 1-631-559-9269    1-516-512-3133

 Email: [info@creative-biomart.com](mailto:info@creative-biomart.com)     Fax: 1-631-938-8127

 45-1 Ramsey Road, Shirley, NY 11967, USA

	reducing (R) condition (SDS-PAGE) due to glycosylation.
<b>Endotoxin</b>	Less than 0.1 EU per µg by the LAL method.
<b>Purity</b>	>90% as determined by SDS-PAGE
<b>Storage</b>	<p>For long term storage, the product should be stored at lyophilized state at -20°C or lower.</p> <p>Please avoid repeated freeze-thaw cycles.</p> <p>This product is stable after storage at:</p> <p>-20°C to -70°C for 12 months in lyophilized state;</p> <p>-70°C for 3 months under sterile conditions after reconstitution.</p>
<b>Reconstitution</b>	It is recommended that sterile water be added to the vial to prepare a stock solution of 0.2 ug/ul. Centrifuge the vial at 4°C before opening to recover the entire contents.

## GENE INFORMATION

<b>Gene Name</b>	GPC3 glypican 3 [ Homo sapiens ]
<b>Official Symbol</b>	GPC3
<b>Synonyms</b>	GPC3; OCI5; Glypican-3; GTR2-2; MXR7; DGSX; SDYS ; SGB; SGBS; SGBS1
<b>Gene ID</b>	2719
<b>mRNA Refseq</b>	NM_001164617
<b>Protein Refseq</b>	NP_001158089
<b>MIM</b>	300037

 Tel: 1-631-559-9269 1-516-512-3133

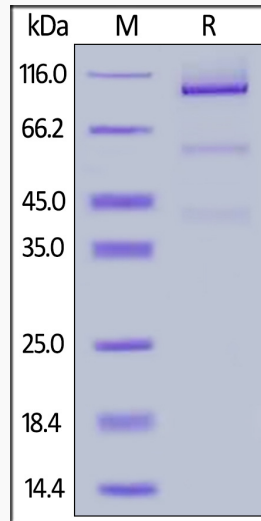
 Email: [info@creative-biomart.com](mailto:info@creative-biomart.com)  Fax: 1-631-938-8127

 45-1 Ramsey Road, Shirley, NY 11967, USA

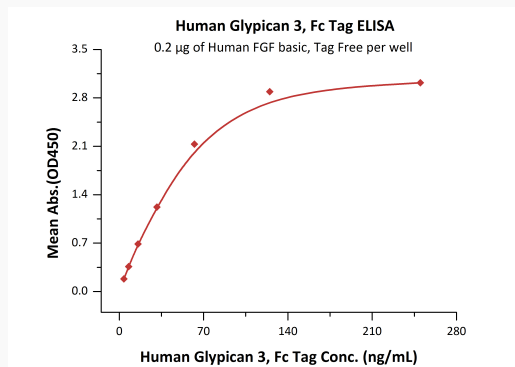
UniProt ID

P51654

SDS-PAGE



Bioactivity-ELISA



Immobilized Human FGF basic, Tag Free at 2 µg/mL (100 µL/well) can bind Human Glypican 3, Fc Tag with a linear range of 4-63 ng/mL.

Tel: 1-631-559-9269 1-516-512-3133

Email: [info@creative-biomart.com](mailto:info@creative-biomart.com) Fax: 1-631-938-8127

45-1 Ramsey Road, Shirley, NY 11967, USA