

Recombinant Human GPC5 Protein, Myc/DDK-tagged, C13 and N15-labeled

Cat. No. GPC5-3138H **Lot. No.** (See product label)

SPECIFICATION

Product Overview	GPC5 MS Standard C13 and N15-labeled recombinant protein (NP_004457) with a C-terminal MYC/DDK tag, was expressed in HEK293 cells.
Species	Human
Source	HEK293
Description	Cell surface heparan sulfate proteoglycans are composed of a membrane-associated protein core substituted with a variable number of heparan sulfate chains. Members of the glypican-related integral membrane proteoglycan family (GRIPS) contain a core protein anchored to the cytoplasmic membrane via a glycosyl phosphatidylinositol linkage. These proteins may play a role in the control of cell division and growth regulation.
Molecular Mass	63.7 kDa
AA Sequence	MDAQTWPVGFRCLLLLALVGSARSEGVQTCEEVRKLFQWRLLGAVRGLPDSPRAG PDLQVCISKKPTCCTRKMEERYQIAARQDMQQFLQTSSSTLKFILSRNAAAFQETLE TLIKQAENYTSILFCSTYRNMALEAAASVQEFFTVDVGLYLFGADVNPPEEFVNRFFDSL FPLVYNHLINPGVTDSSLEYSECIRMARRDVSPFGNIPQRVMGQMGRSLLPSRTFLQ ALNLGIEVINTTDYLHFSKECSRALLKMQYCPHCQGLALTKPCMGYCLNVMRGCLAH MAELNPHWHAYIRSLEELSDAMHGTYDIGHVLLNFHLLVNDAVLQAHNLNGQKLLLEQV NRICGRPVRTPTQSPRCSFDQSKEKHGMKTTTRNSEETLANRRKEFINSLRLYRSFY

 Tel: 1-631-559-9269 1-516-512-3133

 Email: info@creative-biomart.com  Fax: 1-631-938-8127

 45-1 Ramsey Road, Shirley, NY 11967, USA

GGLADQLCANELAAADGLPCWNGEDIVKSYTQRVVGNNGIKAQSGNPEVKVKGIDPV
 INQIIDKLKHVVQLLQGRSPKPKDWELLQLGSGGGMVEQVSGDCDEDEDGCGGSGS
 GEVKRTLKIDWMPDDMNFSDVKQIHQTDGTSTLDTTGAGCAVATESMTFTLISVVM
 LLPGIWTRTRPLEQKLISEEDLAANDILDYKDDDDKV

Purity > 80% as determined by SDS-PAGE and Coomassie blue staining

Stability Stable for 3 months from receipt of products under proper storage and handling conditions.

Storage Store at -80 centigrade. Avoid repeated freeze-thaw cycles.

Concentration 50 µg/mL as determined by BCA

Storage Buffer 100 mM glycine, 25 mM Tris-HCl, pH 7.3.

GENE INFORMATION

Gene Name GPC5 glypican 5 [Homo sapiens (human)]

Official Symbol GPC5

Synonyms GPC5; glypican 5; glypican-5; glypican proteoglycan 5; bA93M14.1;

Gene ID 2262

mRNA Refseq NM_004466

Protein Refseq NP_004457

MIM 602446

 Tel: 1-631-559-9269 1-516-512-3133

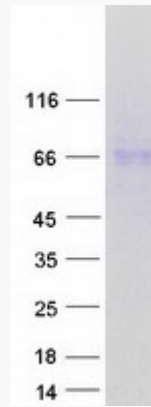
 Email: info@creative-biomart.com  Fax: 1-631-938-8127

 45-1 Ramsey Road, Shirley, NY 11967, USA

UniProt ID

P78333

SDS-PAGE



 Tel: 1-631-559-9269 1-516-512-3133

 Email: info@creative-biomart.com  Fax: 1-631-938-8127

 45-1 Ramsey Road, Shirley, NY 11967, USA